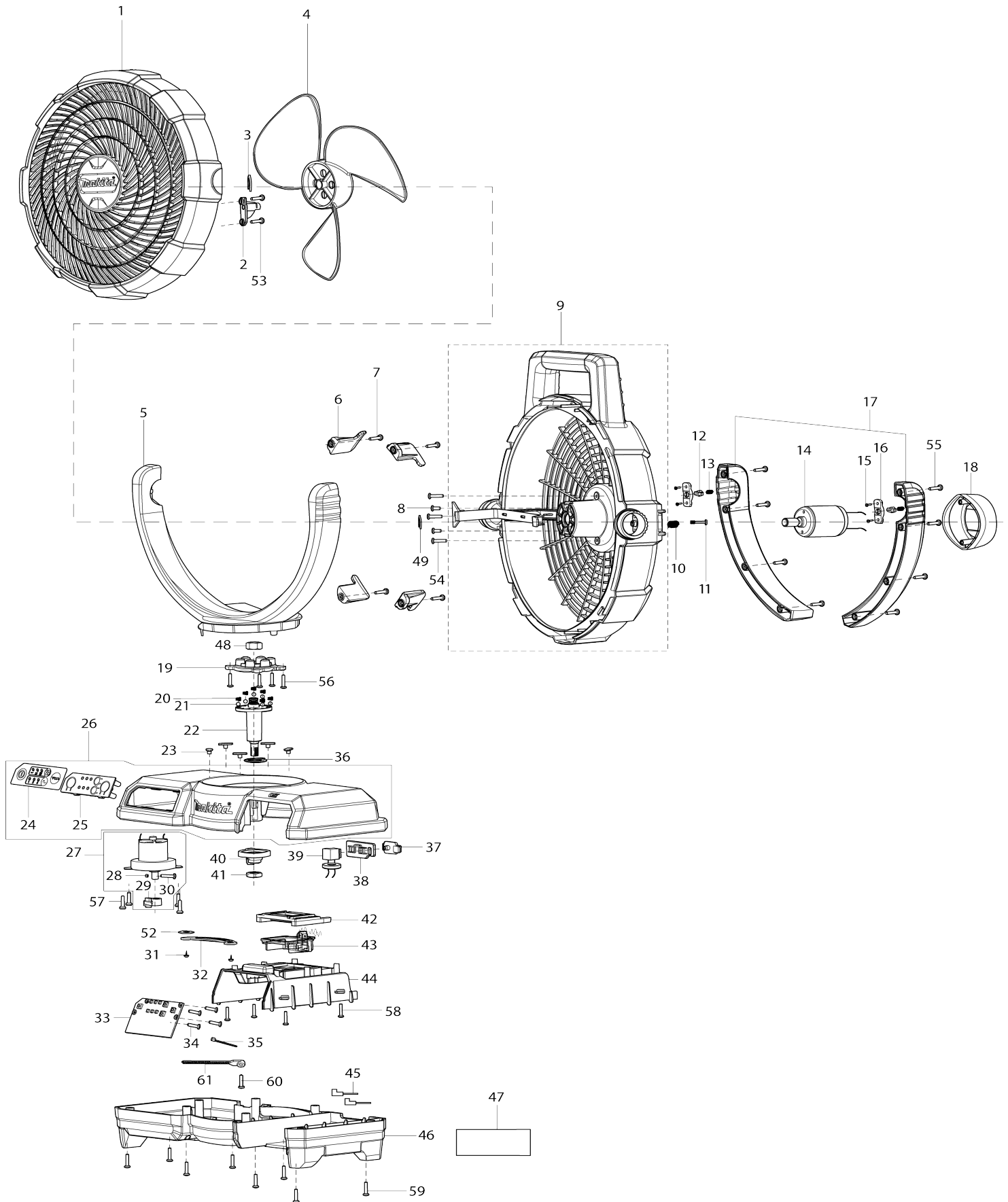


Model No.CF001G CORDLESS FAN



Model No.CF001G CORDLESS FAN

| Obj. č. | Obj. č. | Popis | Možnost záměny | Množství | Nový/Starý | Poznámka 1 | Poznámka 2 |
|---------|------------|--------------------------------|----------------|----------|------------|------------------------|------------|
| 001 | TE00000445 | FRONT COVER OF THE BODY(BLUE) | | 1 | | p | |
| 002 | TE00000362 | RELEASE BUTTON | | 1 | | tla | |
| 003 | TE00000373 | CIRCLIP | | 1 | | spona | |
| 004 | TE00000446 | FAN BLADE | | 1 | * | vrtule | |
| 004-1 | TE00000703 | FAN BLADE | O | 1 | | vrtule =old TE00000446 | |
| 005 | TE00000375 | FRONT COVER OF STAND | | 1 | | p | |
| 006 | TE00000376 | SHELL HOOK(BLUE) | | 4 | | h | |
| 007 | TE00000028 | TAPPING SCREW 3X14 | | 4 | | | |
| 008 | TE00000030 | P.H.SCREW M3X5 | | 2 | | | |
| 009 | TE00000447 | BACK COVER OF THE BODY | | 1 | | zadn | |
| 010 | TE00000378 | SPRING | | 1 | | pru | |
| 011 | TE00000364 | LOCKED SCREW FOR FRONT HOUSING | | 1 | | pojistka | |
| 012 | TE00000190 | STOPPER | | 2 | | | |
| 013 | TE00000197 | SPRING1 | | 2 | | pru | |
| 014 | TE00000448 | MOTOR | | 1 | | motor | |
| 015 | TE00000203 | SELF-TAPPING SCREW 2.5X8 | | 4 | | | |
| 016 | TE00000189 | STOPPER SUPPORT | | 2 | | | |
| 017 | TE00000381 | BACK COVER OF THE SUPPORT L R | | 1 | | zadn | |
| 018 | TE00000011 | MOTOR COVER | | 1 | | | |
| 019 | TE00000062 | COUPLING | | 1 | | | |
| 020 | TE00000064 | COMPRESSION SPRING-5 | | 6 | | | |
| 021 | TE00000063 | STEEL BALL 6 | | 6 | | | |
| 022 | TE00000382 | PRINCIPAL AXIS | | 1 | | osa | |
| 023 | TE00000089 | POM PLATE | | 5 | * | | |
| 023-1 | TE00000474 | POM PLATE | O | 5 | | deska | |
| 024 | TE00000365 | SWITCH LABEL | | 1 | | | |
| 025 | TE00000384 | SWITCH PANEL(BLUE) | | 1 | | | |
| 026 | TE00000449 | UPPER BASE (BLUE) | | 1 | | z | |
| 026 | | INC. 24,25 | | | | | |
| 027 | TE00000386 | SUB MOTOR | | 1 | | motor | |
| 027 | | INC. 28-30 | | | | | |
| 028 | TE00000281 | NUT M3 | | 1 | | matka | |
| 029 | TE00000282 | SHAKE HEAD-POM 2 | | 1 | | hlava | |
| 030 | TE00000102 | PHILLIPS HEAD SCREW M3X14 | | 1 | | | |
| 031 | TE00000256 | TAPPING SCREW 3X8 | | 2 | | | |
| 032 | TE00000277 | SHAKE HEAD -CONNECTION IRON | | 1 | | spojka | |
| 033 | TE00000387 | CONTROLLER | | 1 | * | ovl | |
| 033-1 | TE00000476 | CONTROLLER | O | 1 | | ovl | |
| 034 | TE00000388 | TAPPING SCREW 3X10 | | 4 | | | |
| 035 | TE00000407 | CABLE TIE | | 1 | | kabel | |
| 036 | TE00000090 | POM FLAT WASHER 16 | | 1 | | | |
| 037 | TE00000018 | ADAPTER SOCKET CAP | | 1 | | | |
| 038 | TE00000389 | ADAPTOR PLATE(BLUE) | | 1 | | deska | |
| 039 | TE00000390 | DC CHARGE BASE | | 1 | | z | |
| 040 | TE00000274 | SHAKE HEAD-POM 1 | | 1 | | hlava | |

| | | | | | | | |
|-------|------------|-------------------------|---|---|---|--------------|--|
| 041 | TE00000450 | NUT M8 | | 1 | | matka | |
| 042 | TE00000451 | TERMINAL HOLDER (BLUE) | | 1 | | dr | |
| 043 | TE00000452 | TERMINAL | | 1 | | terminal | |
| 044 | TE00000453 | BATTERY HOUSING (BLUE) | | 1 | | kryt baterie | |
| 045 | TE00000394 | LEAD UNIT | | 1 | | okruh | |
| 046 | TE00000454 | LOWER COVER OF THE BASE | | 1 | | kryt | |
| 047 | TE00000459 | RATING LABEL | | 1 | | | |
| 048 | TE00000069 | LOCKNUT M10 | | 1 | | | |
| 049 | TE00000370 | CIRCLIP M3 | | 1 | | spona | |
| 052 | TE00000408 | WASHER | | 1 | | podlo | |
| 053 | TE00000028 | TAPPING SCREW 3X14 | | 2 | | | |
| 054 | TE00000028 | TAPPING SCREW 3X14 | | 3 | | | |
| 055 | TE00000028 | TAPPING SCREW 3X14 | | 8 | | | |
| 056 | TE00000028 | TAPPING SCREW 3X14 | | 4 | | | |
| 057 | TE00000028 | TAPPING SCREW 3X14 | | 4 | | | |
| 058 | TE00000028 | TAPPING SCREW 3X14 | | 4 | | | |
| 059 | TE00000028 | TAPPING SCREW 3X14 | | 8 | | | |
| 060 | TE00000028 | TAPPING SCREW 3X14 | | 1 | | | |
| 061 | TE00000464 | PERFORATED CABLE TIE | | 1 | | veden | |
| A01 | TE00000173 | AC ADAPTOR | | 1 | * | | |
| A01-1 | TE00000440 | AC ADAPTER | O | 1 | | | |

Prosím uveďte objednáací číslo dílu v objednávce

Datum tisku 17. 10. 2024