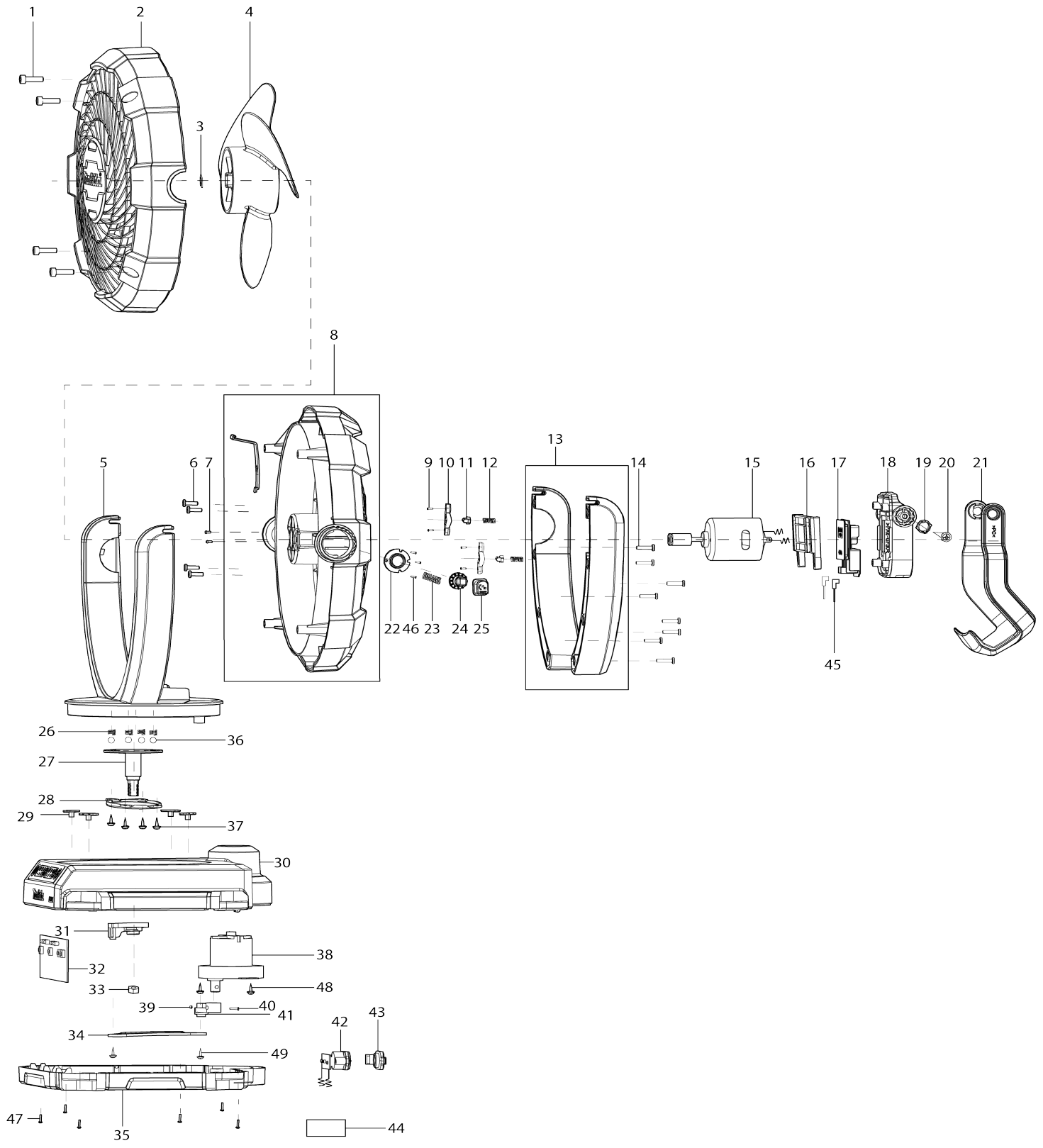


# Model No.DCF102 CORDLESS FAN



Model No.DCF102 CORDLESS FAN

Obj. č.	Obj. č.	Popis	Možn ost zá měny	Množ ství	Nový/ Starý	Poznámka 1	Poznámka 2
001	TE00000201	HEX TAPPING SCREW 4X14		4			
002	TE00000258	FRONT COVER OF THE BODY		1	*	p	
002-1	TE00000643	FRONT COVER OF THE BODY	O	1			
003	TE00000199	CIRCLIP		1		spona	
004	TE00000186	FAN BLADE		1	*	v	
004-1	TE00000698	FAN BLADE	O	1		v	
005	TE00000259	FRONT COVER OF THE STAND		1		kryt	
006	TE00000202	SCREW 3X10		4			
007	TE00000206	P.H. SCREW M3X5		2			
008	TE00000260	BACK COVER OF THE BODY		1		kryt	
009	TE00000203	SELF-TAPPING SCREW 2.5X8		4			
010	TE00000189	STOPPER SUPPORT		2			
011	TE00000190	STOPPER		2			
012	TE00000197	SPRING1		2		pru	
013	TE00000261	BACK COVER OF THE SUPPORT		1		kryt	
014	TE00000204	SCREW 3X14		8			
015	TE00000262	MOTOR AND LEAD		1	*		
015-1	TE00000510	MOTOR AND LEAD	O	1		motor	
016	TE00000263	CLAMPING PARTS OF BATTERY T OUC		1		kontakty	
017	TE00000313	TERMINAL		1		termin	
018	TE00000264	THE BATTERY HOUSING		1		pouzdro pro baterii	
019	TE00000191	STOPPER FOR HOOK AND HAND LE		2			
020	TE00000205	CROSS BELT PAD SCREWS 4X10		2			
021	TE00000265	HOOK&HANDLE		1		dr	
022	TE00000266	HEAD-LOCK ALUMINUM PARTS1		1		hlava	
023	TE00000267	SPRING(LARGE)		1		pru	
024	TE00000268	HEAD-LOCK ALUMINUM PARTS2		1		hlavi	
025	TE00000269	HEAD-LOCK BUTTON		1		z	
026	TE00000270	SPRING(MIDDLE)		4		pru	
027	TE00000271	PRINCIPAL AXIS		1	*	osa	
027-1	TE00000684	PRINCIPAL AXIS	S	1			
028	TE00000272	PRESSING/FIXING PART(FOR PRI NC		1	*	p	
028-1	TE00000686	PRESSING FIXING PART	S	1			
029	TE00000089	POM PLATE		4	*		
029-1	TE00000474	POM PLATE	O	4	*	deska	
029-2	TE00000089	POM PLATE	<	4			
030	TE00000273	UP COVER OF THE BASE		1	*		
030-1	TE00000646	UP COVER OF THE BASE	S	1	*		
030-2	TE00000683	UP COVER OF THE BASE	S	1			
031	TE00000274	SHAKE HEAD-POM 1		1	*	hlava	
031-1	TE00000685	SHAKE HEAD POM 1	S	1			
032	TE00000275	PCB		1	*	PCB	
032-1	TE00000518	PCB	O	1			
033	TE00000276	NUT M8		1	*	matka	
033-1	TE00000687	SCREW M3X8 CROSS ROUND HE AD	S	4			

034	TE00000277	SHAKE HEAD -CONNECTION IRO N		1		spojka	
035	TE00000278	LOWER COVER OF THE BASE		1		kryt	
036	TE00000063	STEEL BALL 6		4			
037	TE00000279	TAPPING SCREW 3X8		4			
038	TE00000280	SUB MOTOR		1	*		
038-1	TE00000417	SUB MOTOR	O	1			
039	TE00000281	NUT M3		1		matka	
040	TE00000102	PHILLIPS HEAD SCREW M3X14		1			
041	TE00000282	SHAKE HEAD-POM 2		1		hlava	
042	TE00000283	FIXED PART OF DC BASE		1		d	
043	TE00000192	CHARGING SOCKET PLUG		1		spojka	
044	TE00000301	RAITING LABEL		1			
045	TE00000284	LEAD WITH INSERTING PIECE		2	*		
045-1	TE00000511	LEAD WITH INSERTING PIECE	O	2			
046	TE00000203	SELF-TAPPING SCREW 2.5X8		3			
047	TE00000204	SCREW 3X14		6			
048	TE00000279	TAPPING SCREW 3X8		2			
049	TE00000279	TAPPING SCREW 3X8		2			
050	TE00000317	SWITCH LABEL		1	*		
050-1	TE00000647	SWITCH LABEL	S	1			
051	TE00000515	GROMMET		1	*		
051-1	TE00000537	WIRE SHEATH RUBBER	O	1	*		
052	TE00000418	CABLE TIE		1			
053	TE00000204	SCREW 3X14		1			
054	TE00000682	STRUCTURAL COMPONENT		1			
054		INC.27,28,30,31,33,52,55					
055	TE00000681	PVC TUBE	S	1			

Prosím uveďte objednáací číslo dílu v objednávce

Datum tisku 17. 10. 2024