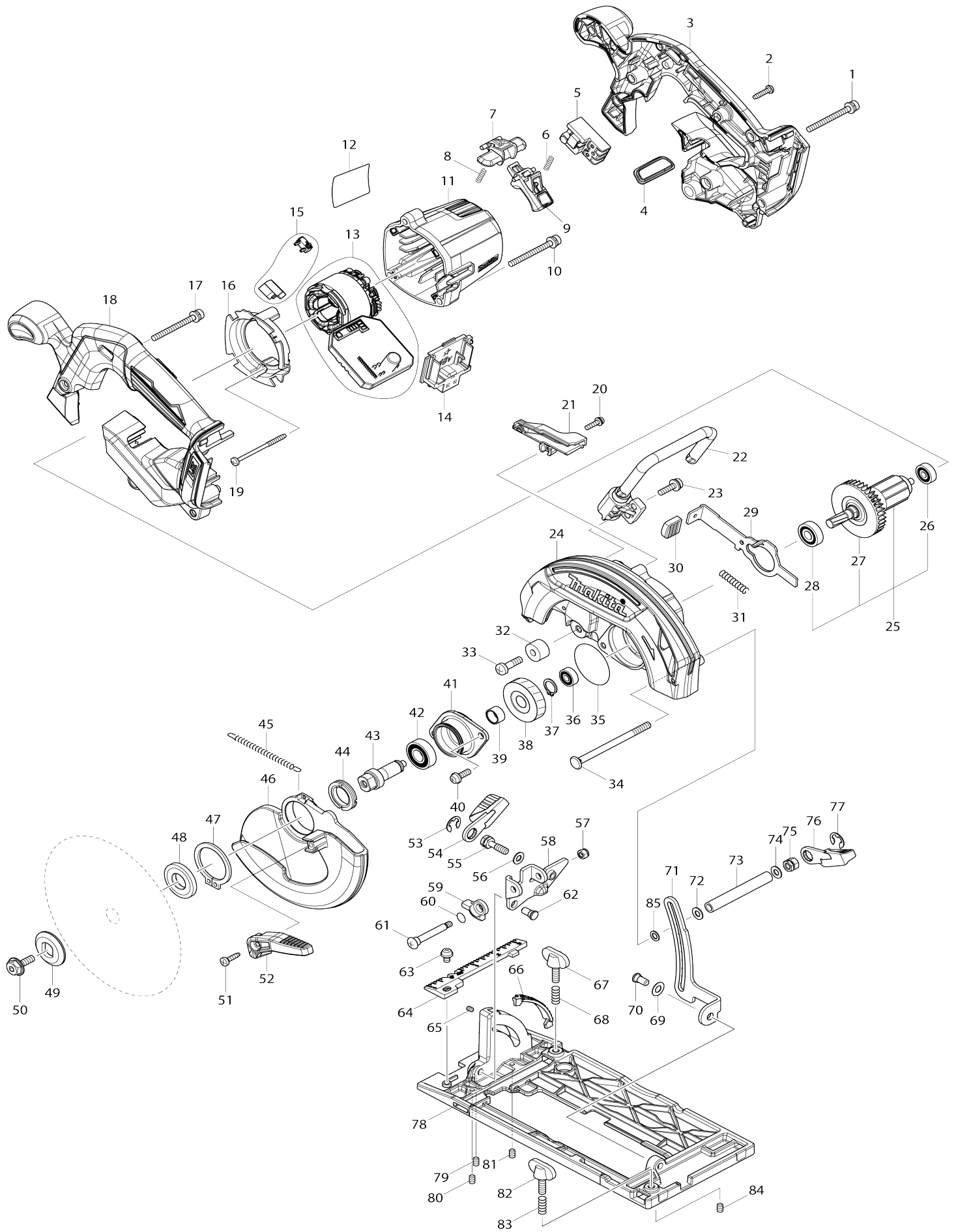


Model No.DHS680 165MM CORDLESS CIRCULAR SAW



Model No.DHS680 165MM CORDLESS CIRCULAR SAW

Obj. č.	Obj. č.	Popis	Možn ost zá měny	Množ ství	Nový/ Starý	Poznámka 1	Poznámka 2
001	911263-2	šroub M5x40		1			
002	265995-6	šroub 4x18 = old 265941-9		7			
003	183A15-9	HANDLE SET		1			
C10	263005-3	vymezovací čep 6		2			
003		INC. 18					
004	142948-1	INDICATION PLATE COMPLETE		1			
005	650734-1	SWITCH TG73BDS-2		1		vyp	
006	231469-9	compression spring 4		1		compression spring 4	
007	419664-3	vypínač		1		vyp	
008	231469-9	compression spring 4		1		compression spring 4	
009	455480-9	SWITCH LEVER		1			
010	911263-2	šroub M5x40		3			
011	455437-0	MOTOR HOUSING		1			
012	850H69-0	DHS680 NAME PLATE		1			
013	632D90-5	STATOR UNIT		1	*		
013-1	629348-7	STATOR UNIT	<	1	*		
013-2	629B61-9	STATOR	S	1		stator =old 629A60-5	
014	644808-8	TERMINAL		1		terminal	
015	632D81-6	SWITCH UNIT		1			
016	455440-1	BAFFLE PLATE		1			
017	911263-2	šroub M5x40		1			
018	183A15-9	HANDLE SET		1			
C10	263005-3	vymezovací čep 6		2			
018		INC. 3					
019	266091-3	šroub		2			
020	911128-8	P.H.SCREW M4X16 WITH WR		1			
021	455483-3	DUCT		1			
022	123269-0	HOOK ASSEMBLY		1		h	
023	911233-1	šroub M5x20		2			
024	142942-3	BLADE CASE COMPLETE		1	*		
C10	213953-6	o-kroužek 24		1	*	o-krou	
024-1	143256-3	BLADE CASE COMPLETE	<	1	*	obal p	
C10	213953-6	o-kroužek 24		1	*	o-krou	
024-2	141P24-4	BLADE CASE COMPLETE	O	1			
C10	213953-6	o-kroužek 24		1		o-krou	
025	519359-9	ROTOR ASS'Y		1	*	rotor DHS680	
025		INC. 26-28			*		
025-1	519359-9	ROTOR ASS'Y	O	1		rotor DHS680	
025-1		INC. 26-28					
026	210022-4	kuličkové ložisko 626 DDW		1			
027	240045-8	FAN 55		1			
028	210051-7	BALL BEARING 609LLB		1			
029	346837-4	SHAFT LOCK		1			
030	286275-7	CAP		1			
031	233117-6	pružina 6 GA7010C/9010C/S		1		pru	
032	262552-1	RUBBER SLEEVE 6		1			
033	251247-1	+ PAN HEAD SCREW M6X20		1			
034	266194-3	FLAT HEAD SCREW M6X90		1			

035	213565-5	O RING 42		1	*		
035-1	213A83-9	O-RING 39	<	1			
036	210028-2	BALL BEARING 606ZZ		1	*		
036-1	210137-7	BALL BEARING 606ZZ	O	1		kuli	
037	961052-5	segrovka vnější S-12		1		segrovka	
038	227794-4	HELICAL GEAR 50		1			
039	257349-1	SLEEVE 12		1			
040	911223-4	šroub M5x16		2			
041	319212-7	BEARING BOX		1		pouzdro lo	
042	211131-2	kuličkové ložisko 6001DDW =old 922041		1	*	lo	
042-1	210216-1	BALL BEARING 6001DDW	>	1		lo	
043	326459-6	SPINDLE		1			
044	285845-9	BEARING RETAINER 19-29		1		kryt lo	
045	231878-2	TENSION SPRING 4		1		pru	
046	319211-9	SAFETY COVER		1		kryt DHS680	
047	961152-1	RETAINING RING (EXT) S-34		1		segrovka vn	
048	224473-5	INNER FLANGE 35		1	*		
048-1	224593-5	INNER FLANGE 35	<	1		podlo	
049	224409-4	OUTER FLANGE 35		1		p	
050	266924-2	HEX. SOCKET HEX. BOLT M6X18		1			
051	266034-5	šroub = old 933417		1			
052	272281-8	LEVER 39		1			
053	257982-9	BOW STOP RING E-8		1		krou	
054	272272-9	LEVER 45		1		p	
055	266735-5	HEX.BOLT M6X20		1	*		
055-1	265B21-3	HEX.BOLT M6X20	S	1			
056	941151-9	podložka 6 = old 253047-5		1	*	podlo	
057	252103-8	zajišťovací šroub M5-8		1			
058	346836-6	ANGULAR GUIDE		1		dr	
059	317986-4	STOPPER		1		doraz	
060	213062-1	o kroužek 9 AN7000/BSR730S/G A70		1			
061	265084-7	+ TRUSS HEAD SCREW M5		1			
062	256480-0	čep		1			
063	911203-0	šroub M5x8		1	*		
063-1	911208-0	šroub M5x10	O	1			
064	455516-4	TOP GUIDE		1		prav	
065	266318-1	šroub šestihran M4x6 LS0714FL		2			
066	455517-2	BEVEL GUIDE		1			
067	251896-4	SCREW M5X20		1			
068	231007-7	COMPRESSION SPRING 6		1		pru	
069	253058-0	podložka 7		1	*	podlo	
070	256511-5	SHOULDER PIN 6-7		1			
071	346838-2	DEPTH GUIDE		1		veden	
072	941151-9	podložka 6 = old 253047-5		1		podlo	
073	332126-3	PIPE 6		1		trubka DHS680	
074	941151-9	podložka 6 = old 253047-5		1		podlo	
075	264103-6	HEX. NUT M6		1		matka DHS680	
076	272272-9	LEVER 45		1		p	
077	257982-9	BOW STOP RING E-8		1		krou	
078	319210-1	BASE		1	*		

078-1	312B04-5	BASE	S	1		z	
079	266436-5	H.S.SET SCREW(FLAT POINT)M5X8		1			
080	266436-5	H.S.SET SCREW(FLAT POINT)M5X8		1			
081	266436-5	H.S.SET SCREW(FLAT POINT)M5X8		1			
082	251896-4	SCREW M5X20		1			
083	231007-7	COMPRESSION SPRING 6		1		pru	
084	266436-5	H.S.SET SCREW(FLAT POINT)M5X8		1			
085	253077-6	distanční podložka 6		1	*	distan	
086	620K93-3	CONTROLLER	S	1		elektronika	
087	652119-7	PAN HEAD SCREW M2X6	S	6			
A01	783203-8	klíč imbus 5		1			
A02	A-85101	T.C.T.SAW BLADE 165X24TX20		1	*		
A02	B-57320	TCT BLADE165X20X56TWOOD/MDF DB		1			
A02	A-57320	BOW SHAPE PLUNGE BLADE32 T MA033		1			
A02-1	B-62979	TCT BLADE165X25T WOOD EFFICUT	X	1			
A03	164095-8	vodítko		1		doraz 5704R 5008M G SS610 HS630 HS300 HS003G	
A04	196961-1	DUST NOZZLE SET		1			
C10	911128-8	P.H.SCREW M4X16 WITH WR		1			
A05	821551-8	systainer Makpac 395x295x210 mm		1			
C10	453974-8	LATCH		4		spona Makpacu	
A05	194204-5	baterie BL1830 18V/3,0Ah Li-ion		2	*		
A05-1	194204-5	baterie BL1830 18V/3,0Ah Li-ion	O	2	*		
A05-1	196399-0	BATTERY BL1840 SET		2	*		
A05-2	197600-6	BATTERY BL1830B SET	<	2	*		
A05-2	197265-4	BATTERY BL1840B SET	<	2	*		
A05-2	197280-8	BATTERY BL1850B SET		2	*		
A05-3	197600-6	BATTERY BL1830B SET	O	2			
A05-3	197265-4	BATTERY BL1840B SET	O	2			
A05-3	197280-8	BATTERY BL1850B SET	O	2			
A06	838182-6	INNER TRAY		1			
A06	450128-8	kryt baterie		1			
A07	805F45-7	DHS680ZJ INDICATION LABEL		1	*		
A07	821551-8	systainer Makpac 395x295x210 mm		1			
C10	453974-8	LATCH		4		spona Makpacu	
A07-1	805F43-1	DHS680ZJ INDICATION LABEL	O	1	*		
A07-2	816A47-8	DHS680ZJ INDICATION LABEL	O	1			
A07-2	817K34-0	DHS680ZJ1 INDICATION LABEL		1			
A08	805F46-5	DHS680ZJ PLASTIC CASE LABEL		2	*		
A08	838182-6	INNER TRAY		1			
A08-1	809H36-2	DHS680ZJ PLASTIC CASE LABEL	O	2	*		
A08-2	816A48-6	DHS680ZJ PLASTIC CASE LABEL	X	2			
A08-2	817K35-8	DHS680ZJ1 PLASTIC CASE LABEL		2			
A09	805F47-3	DHS680RFJ INDICATION LABEL		1	*		
A09	805F49-9	DHS680RMJ INDICATION LABEL		1	*		

A09	805F51-2	DHS680RTJ INDICATION LABEL		1	*		
A09-1	805V72-0	DHS680RFJ INDICATION LABEL	O	1	*		
A09-1	805V45-3	DHS680RMJ INDICATION LABEL	O	1	*		
A09-1	806H07-0	DHS680RTJ INDICATION LABEL	O	1	*		
A09-2	816A49-4	DHS680RFJ INDICATION LABEL	O	1			
A09-2	816A52-5	DHS680RMJ INDICATION LABEL	O	1			
A09-2	816A54-1	DHS680RTJ INDICATION LABEL	O	1			
A09-2	817K36-6	DHS680RFJ1 INDICATION LABEL		1			
A09-2	817K38-2	DHS680RTJ1 INDICATION LABEL		1			
A10	805F48-1	DHS680RFJ PLASTIC CASE LABEL		2	*		
A10	805F50-4	DHS680RMJ PLASTIC CASE LABEL		2	*		
A10	805F52-0	DHS680RTJ PLASTIC CASE LABEL		2	*		
A10-1	805V73-8	DHS680RFJ PLASTIC CASE LABEL	O	2	*		
A10-1	805V77-0	DHS680RMJ PLASTIC CASE LABEL	O	2	*		
A10-1	806H08-8	DHS680RTJ PLASTIC CASE LABEL	O	2	*		
A10-2	816A50-9	DHS680RFJ PLASTIC CASE LABEL	X	2			
A10-2	816A53-3	DHS680RMJ PLASTIC CASE LABEL	X	2			
A10-2	816A55-9	DHS680RTJ PLASTIC CASE LABEL	X	2			
A10-2	817K37-4	DHS680RFJ1 PLASTIC CASE LABEL		2			
A10-2	817K39-0	DHS680RTJ1 PLASTIC CASE LABEL		2			
A11	***DC18RC	DC18RC FAST CHARGER		1			
F08-3	197606-4	BATTERY BL1830B SET (2PIECES)	O	1	*		
F09-3	197600-6	BATTERY BL1830B SET	O	1			
F10-4	197599-5	BATTERY BL1830B SET	O	1			
F11-3	197267-0	BATTERY BL1840B SET	O	1			
F12-3	197265-4	BATTERY BL1840B SET	O	1			
F13	194368-5	vodící lišta 1400mm=old192516-0		1			
F14	194925-9	GUIDE RAIL 1900 SET		1			
F16	194367-7	vodící lišta SP6000 3000mm		1			
F18	196664-7	BEVEL GUIDE SET		1	*		
F21	194416-0	SHEET 10000 SET		1			
F22	194417-8	RUBBER SHEET 10000 SET		1			
F23	194418-6	POSITION SHEET 1400 SET		1			
F25	194910-2	POSITION SHEET 1900 SET		1			
F37	199140-0	GUIDE RAIL 1000 SET		1			
F38	199141-8	GUIDE RAIL 1500 SET		1			
F41	191B17-7	GUIDE RAIL ADAPTER D SET		1			

Prosím uveďte objednáčíslo dílu v objednávce

Datum tisku 21. 10. 2024