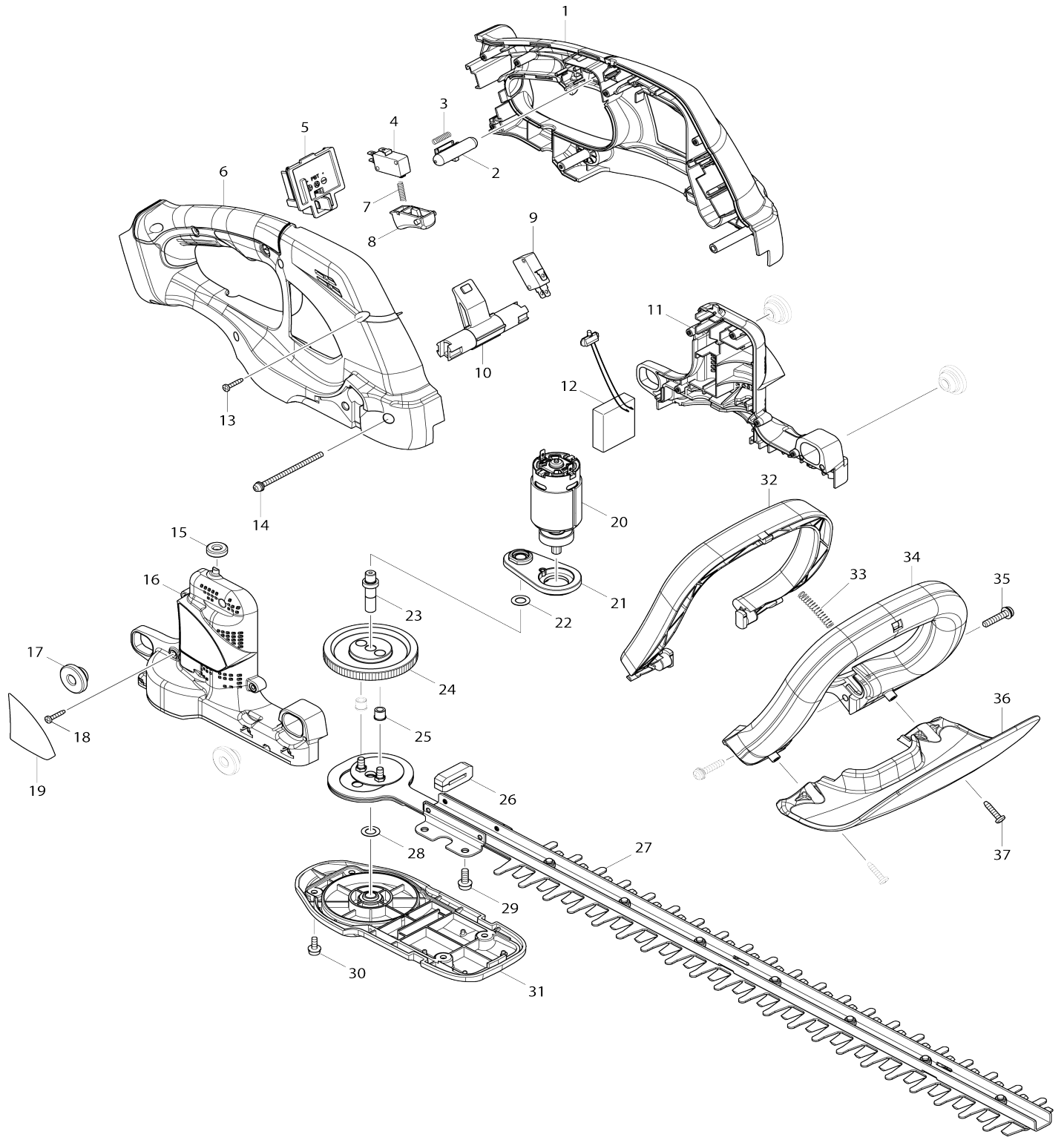


Model No.DUH523 520MM CORDLESS HEDGE TRIMMER



Model No.DUH523 520MM CORDLESS HEDGE TRIMMER

Obj. č.	Obj. č.	Popis	Možn ost zá měny	Množ ství	Nový/ Starý	Poznámka 1	Poznámka 2
001	187286-4	HANDLE SET		1	*		
001		INC. 6			*		
001-1	183K17-5	HANDLE SET	<	1		dr	
C10	263005-3	vymezovací čep 6		2			
001-1		INC. 6					
002	452438-9	LOCK OFF BUTTON		1		pojistka DUH523 DU M111 DUM604=new4 58900-2	
003	231473-8	Compression Spring 4		1			
004	651852-8	mikrospínač V-15-1A5		1		mikrosp	
005	643852-2	patice new 3 kontakty		1		patice =nov	
006	187286-4	HANDLE SET		1	*		
006		INC. 1			*		
006-1	183K17-5	HANDLE SET	<	1		dr	
C10	263005-3	vymezovací čep 6		2			
006-1		INC. 1					
007	231473-8	Compression Spring 4		1			
008	417564-1	SWITCH LEVER		1		p	
009	651852-8	mikrospínač V-15-1A5		1		mikrosp	
010	452681-0	SWITCH ARM		1			
011	187285-6	MOTOR HOUSING SET		1	*		
011		INC. 16			*		
011-1	183P34-5	MOTOR HOUSING SET	S	1		obal stroje=old18728 5-6	
011-1		INC. 16					
012	638966-0	CONTROLLER UNIT		1	*		
C10	688161-2	LINE FILTER		1	*		
012-1	632M89-4	CONTROLLER UNIT	<	1	*		
C10	688161-2	LINE FILTER		1	*		
012-2	632N08-6	CONTROLLER UNIT	O	1	*	ovl	
C10	688161-2	LINE FILTER		1	*		
012-3	632R83-6	CONTROLLER UNIT	<	1		elektronika =old 6389 66-0	
C10	688161-2	LINE FILTER		1			
C20	654086-2	RECEPTACLE		2			
013	266429-2	TAPPING SCREW 3X16		6			
014	911193-7	PAN HEAD SCREW M4X65		1			
015	424195-9	RUBBER RING 6		1			
016	187285-6	MOTOR HOUSING SET		1	*		
016		INC. 11			*		
016-1	183P34-5	MOTOR HOUSING SET	S	1		obal stroje=old18728 5-6	
016-1		INC. 11					
017	424394-3	RUBBER RING 8		4			
018	266429-2	TAPPING SCREW 3X16		5			
019	815U45-9	DUH523 NAME PLATE		1			
020	629930-2	DC MOTOR		1	*	motor DUH483 DUH5 23=new629450-6	
020-1	629450-6	DC MOTOR	S	1		motor DUH483 DUH5 23=old629930-2	

021	141211-9	BEARING BOX COMPLETE		1		pouzdro lo	
022	253215-0	796119		1			
023	326034-8	vřeteno		1		v	
024	227281-3	SPUR GEAR 93		1			
025	262570-9	unašeč		2		una	
026	423417-4	DUST GUARD		1		prachovka	
027	195769-0	SHEAR BLADE COMPLETE SET		1			
C10	188605-7	OIL VESSEL SET		1			
C20	262570-9	unašeč		2		una	
028	253215-0	796119		1			
029	911218-7	Pan Head Screw M5x14=new922 217-4		4			
030	911113-1	šroub M4x10		4			
031	453317-4	UNDER COVER		1			
032	452678-9	SWITCH LEVER B		1			
033	234261-2	COMPRESSION SPRING 5		1			
034	452682-8	FRONT GRIP		1			
035	911243-8	šroub M5x25		2			
036	453316-6	PROTECTOR		1		kryt	
037	265995-6	šroub 4x18 = old 265941-9		2			
A01	452685-2	BLADE COVER		1			
A02	***DC18SD	DC18SD BATTERY CHARGER		1			
A02	***DC18RC	DC18RC FAST CHARGER		1			
A02-1	***DC18SD	DC18SD BATTERY CHARGER	O	1			
A03	194513-2	baterie BL1815 18V/1,3Ah Li-ion		1			
A03	194204-5	baterie BL1830 18V/3,0Ah Li-ion		1	*		
A03	196235-0	BATTERY BL1815N SET		1	*		
A03-1	194204-5	baterie BL1830 18V/3,0Ah Li-ion	O	1	*		
A03-1	196235-0	BATTERY BL1815N SET	O	1			
A03-2	197600-6	BATTERY BL1830B SET	<	1	*		
A03-3	197600-6	BATTERY BL1830B SET	O	1			
A04	450128-8	kryt baterie		1			
E01	645006-7	kondenzátor = old 645105-5		1	*	kondenz	
F03	194513-2	baterie BL1815 18V/1,3Ah Li-ion		1			
F04	195050-9	sběrač odřezků		1			
F05-3	197606-4	BATTERY BL1830B SET (2PIECES)	O	1			
F06	195445-6	BATTERY BL1815 SET		1			
F08	196167-1	SHEAR BLADE COMPLETE SET		1			
F09-2	196235-0	BATTERY BL1815N SET	O	1			
F10-1	196449-1	BATTERY BL1815N SET	O	1			
F11-2	196449-1	BATTERY BL1815N SET	O	1			

Prosím uveďte objednáč. číslo dílu v objednávce

Datum tisku 23. 10. 2024