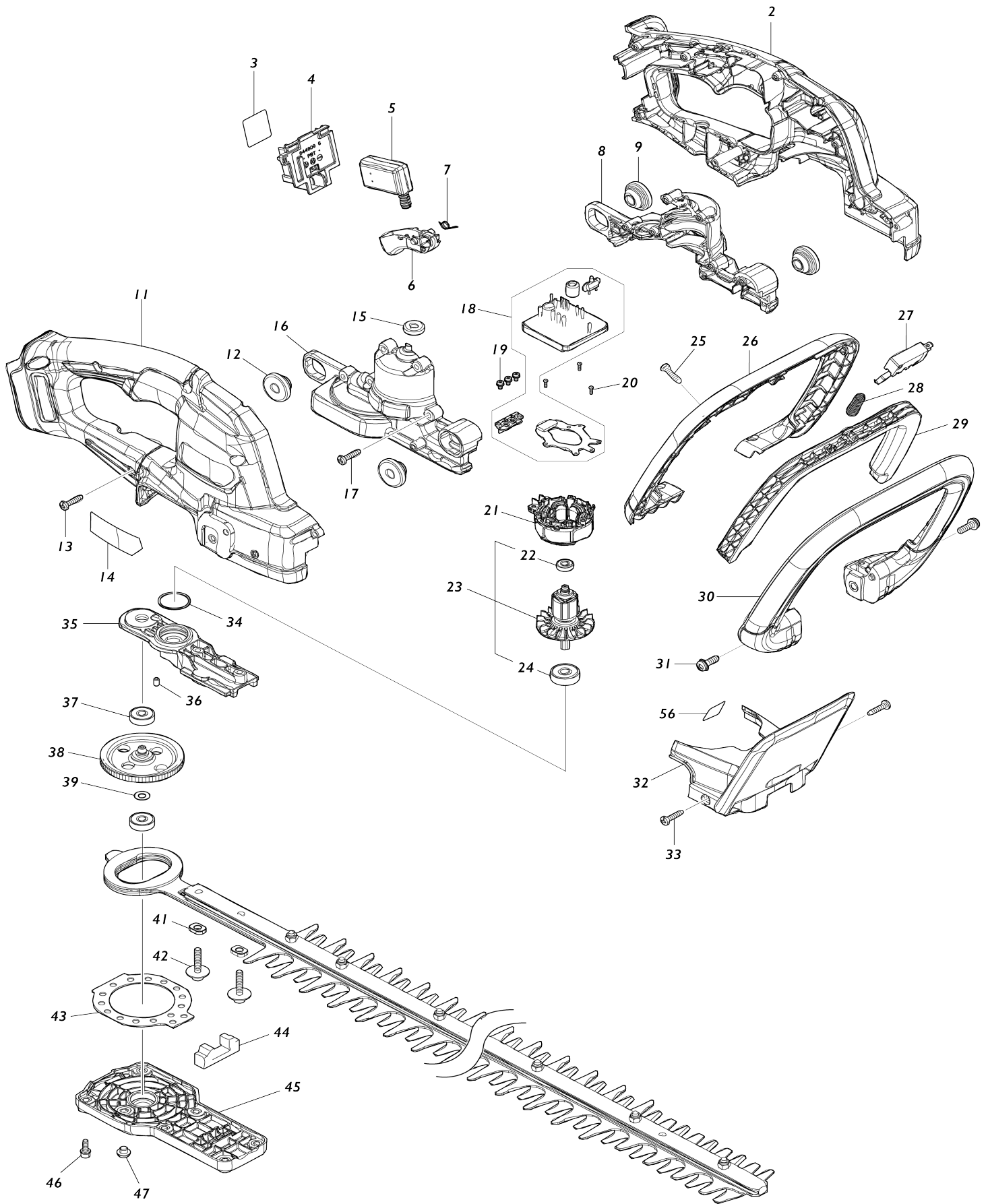
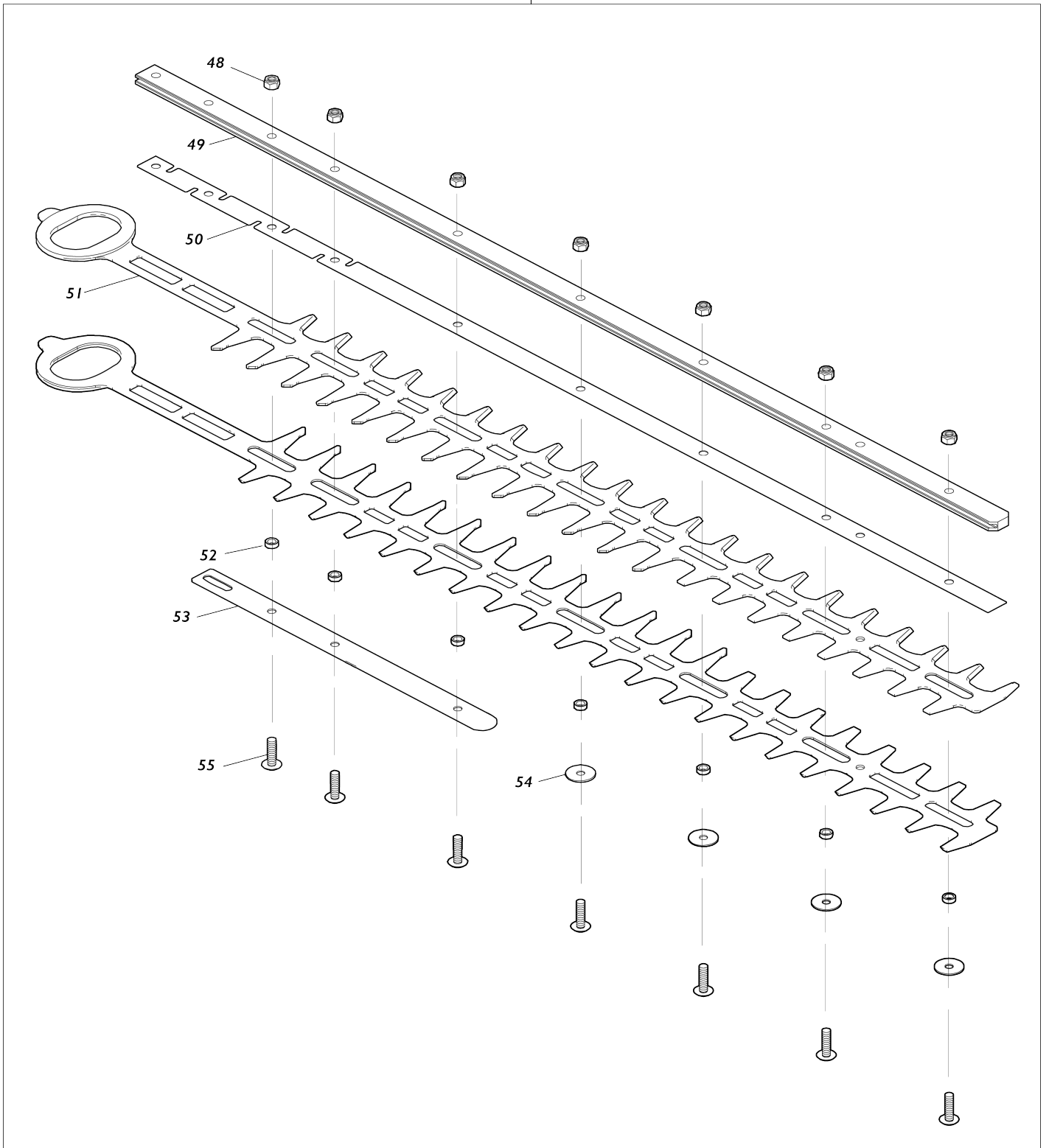


Model No.DUH606 500MM CORDLESS HEDGE TRIMMER



40



Model No.DUH606 500MM CORDLESS HEDGE TRIMMER

Obj. č.	Obj. č.	Popis	Možn ost zá měny	Množ ství	Nový/ Starý	Poznámka 1	Poznámka 2
002	183V39-1	HANDLE SET		1		dr	
C10	263005-3	vymezovací čep 6		2			
002		INC. 11					
003	8580P9-6	DUH606 SERIAL NO. LABEL		1			
004	644809-6	TERMINAL		1		kontakt	
005	650033-1	SWITCH C3XA-3PSPM-1		1		vp	
006	413J41-1	SWITCH LEVER RE		1		p	
007	232770-5	TORSION SPRING 6		1		pru	
008	183V95-1	MOTOR HOUSING SET		1		obal motoru	
008		INC. 16					
009	424394-3	RUBBER RING 8		2			
011	183V39-1	HANDLE SET		1		dr	
C10	263005-3	vymezovací čep 6		2			
011		INC. 2					
012	424394-3	RUBBER RING 8		2			
013	266326-2	šroub 4x18=new265995-6		7	*		
013-1	265B67-9	TAPPING SCREW 4X18	O	7			
014	8580P3-8	DUH606 NAME PLATE		1			
015	424195-9	RUBBER RING 6		1			
016	183V95-1	MOTOR HOUSING SET		1		obal motoru	
016		INC. 8					
017	266326-2	šroub 4x18=new265995-6		6	*		
017-1	265B67-9	TAPPING SCREW 4X18	O	6			
018	620J54-7	CONTROLLER		1		ovl	
019	652069-6	FLAT HEAD SCREW M3X6		3			
020	266490-9	TAPPING SCREW PT 2X6		3	*		
020-1	265C47-1	TAPPING SCREW PT 2X6	O	3			
021	629B24-5	STATOR		1		stator	
022	211157-4	BALL BEARING 695ZZ		1		lo	
023	519764-0	ROTOR ASSY		1		rotor	
023		INC. 22,24					
024	210023-2	kuličkové ložisko 627 DDW		1			
025	266326-2	šroub 4x18=new265995-6		6	*		
025-1	265B67-9	TAPPING SCREW 4X18	O	6			
026	413J39-8	FRONT HANDLE COVER E		1		p	
027	650034-9	SWITCH D2VW-01L3-3HS		1		vyp	
028	231325-3	pružina 6 LS0714		1		pru	
029	413J40-3	SWITCH LEVER FE		1		p	
030	413J38-0	FRONT HANDLE E		1		zadn	
031	911223-4	šroub M5x16		2			
032	141K47-2	PROTECTOR COMPLETE		1	*	chr	
C10	8059E3-6	CAUTION LABEL		1	*		
032-1	1410D5-0	PROTECTOR COMPLETE	O	1			
C11	8074L3-1	CAUTION LABEL	O	1			
033	266326-2	šroub 4x18=new265995-6		2	*		
033-1	265B67-9	TAPPING SCREW 4X18	O	2			
034	213961-7	O RING 22		1			
035	312D09-7	BEARING HOUSING E		1		pouzdro lo	

036	263002-9	vymezovací čep 4		1		
037	211016-2	kuličkové ložisko 626LLB		2		kuli
038	141K44-8	GEAR COMPLETE		1		p
039	253715-0	podložka 6		1		podlo
040	1910H9-0	SHEAR BLADE 600E SET		1	*	
C10	199450-5	GREASE VESSEL SET		1	*	
C20	313436-7	SPACER		2	*	vymezova
040		INC. 48-55			*	
040-1	1914G5-5	SHEAR BLADE 600E SET	O	1		
C10	199450-5	GREASE VESSEL SET		1		
C20	313436-7	SPACER		2		vymezova
040-1		INC. 48-55				
041	313436-7	SPACER		2		vymezova
042	265A89-3	H.S.H.BOLT M5X25 WITH WR		2		
043	347A10-5	PLATE		1		deska
044	422904-0	DUST GUARD		1		protiprachov
045	413J26-7	UNDER COVER		1		spodn
046	922118-6	hex. socket head bolt M4x12		6		hex. socket head bolt M4x12
047	266559-9	H.S.BUTTON HEAD BOLT M6X4		1		
048	264013-7	HEX. LOCK NUT M5-8		7		
049	327982-4	GUIDE BAR 600E		1		
050	347987-8	PLATE 600E		1		
051	725300-4	SHEAR BLADE 600E		2	*	
051-1	725329-0	SHEAR BLADE 600 E	O	2		
052	257876-8	RING 5		7		
053	347990-9	LOWER PLATE		1		
054	253571-8	FLAT WASHER 5		4		
055	265A40-3	+TRUSS HEAD SCREW M5X20		7		
056	807E85-5	SOUND 92DB LABEL		1		
A01	413L92-6	BLADE COVER 600		1		
A02	***DC18RC	DC18RC FAST CHARGER		1		
A02		COMPO-PARTS				
A03	450128-8	kryt baterie		1		
A04	197280-8	BATTERY BL1850B SET		1		
A04	197600-6	BATTERY BL1830B SET		1		
F01	1910H9-0	SHEAR BLADE 600E SET		1	*	
F01-1	1914G5-5	SHEAR BLADE 600E SET	O	1		
F02	1910T2-8	CHIP RECEIVER 600 SET		1		
F03	199450-5	GREASE VESSEL SET		1		

Prosím uveďte objednáč. číslo dílu v objednávce

Datum tisku 23. 10. 2024