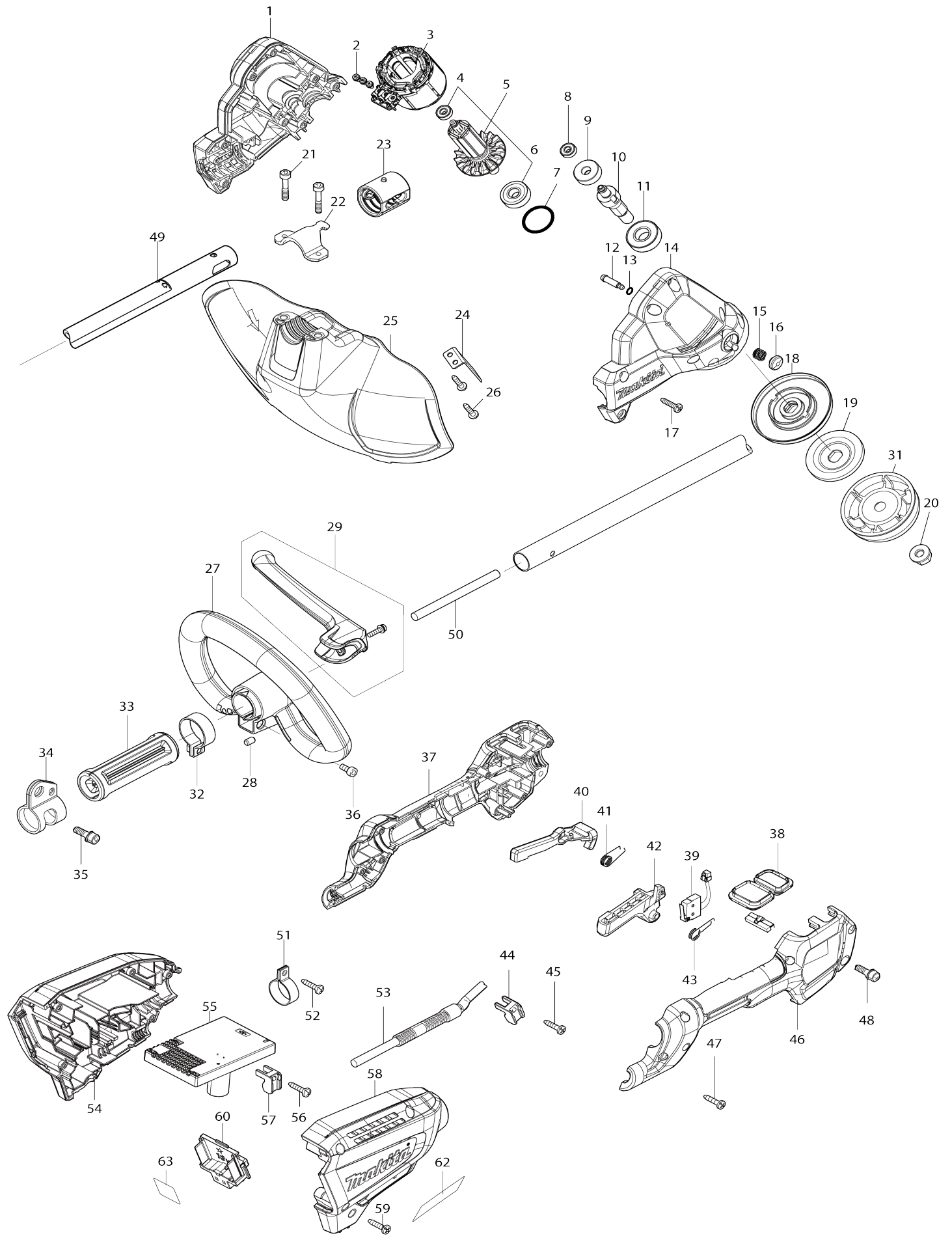


Model No.DUR190L CORDLESS GRASS TRIMMER



Model No.DUR190L CORDLESS GRASS TRIMMER

Obj. č.	Obj. č.	Popis	Možn ost zá měny	Množ ství	Nový/ Starý	Poznámka 1	Poznámka 2
001	183P06-0	MOTOR HOUSING SET		1		obal stroje	
001		INC. 14					
002	652069-6	FLAT HEAD SCREW M3X6		3			
003	629248-1	STATOR		1		stator	
004	210215-3	BALL BEARING 695ZZ		1		lo	
005	510449-1	ROTOR ASSY		1		rotor	
005		INC. 4,6					
006	210049-4	ložisko		1		lo	
007	213380-7	o-kroužek HR2020		1		o-krou	
008	210215-3	BALL BEARING 695ZZ		1		lo	
009	221492-2	HELICAL GEAR 26		1		ozuben	
010	327542-2	CUTTER SHAFT		1			
011	211131-2	kuličkové ložisko 6001DDW =old 922041		1		lo	
012	256546-6	SHOULDER PIN 4		1			
013	213021-5	o-kroužek 5		1		o-krou	
014	183P06-0	MOTOR HOUSING SET		1		obal stroje	
014		INC. 1					
015	233072-2	vinutá pružina 8		1		vinut	
016	412408-0	PIN CAP		1		v	
017	266326-2	šroub 4x18=new265995-6		8			
018	140T23-7	RECEIVE WASHER COMPLETE		1		podlo	
021	251513-6	H.S.H.BOLT M5X25		2			
022	347667-6	PROTECTOR CLAMP		1		spona	
023	424567-8	RUBBER SLEEVE 24		1		gufero	
024	346855-2	CUTTER		1		no	
025	412392-9	PROTECTOR		1		chr	
026	266326-2	šroub 4x18=new265995-6		2			
027	457937-6	LOOP HANDLE 24		1	*		
027-1	413L67-5	LOOP HANDLE 24	O	1		rukoje	
028	263005-3	vymezovací čep 6		1			
029	143695-7	BARRIER COMPLETE		1			
C10	911128-8	P.H.SCREW M4X16 WITH WR		1			
032	347011-7	PIPE CLAMP 29		1			
033	451601-1	SPACER 24		1			
034	347116-3	HANGER		1		dr	
035	922212-4	imbus M5x12		1		imbus M5x12	
036	922212-4	imbus M5x12		1		imbus M5x12	
037	183P04-4	GRIP SET		1		dr	
C10	931202-6	HEX. NUT M5		1			
037		INC. 46					
038	140T18-0	SUB CONTROLLER COMPLETE		1		ovl	
C10	8010M7-8	SWITCH LABEL		1			
C20	8010M8-6	INDICATION LABEL		1			
039	632E26-0	SWITCH UNIT		1		vyp	
040	455629-1	LOCK OFF LEVER		1	*	z	
040-1	413Y35-6	LOCK OFF LEVER	O	1		z	
041	233621-5	TORSION SPRING 9		1		pru	

042	455625-9	SWITCH LEVER		1		p	
043	233612-6	TORSION SPRING 10		1		pru	
044	687260-7	držák kabelu GA5020/6020/HR22 30		1		dr	
045	266326-2	šroub 4x18=new265995-6		1			
046	183P04-4	GRIP SET		1		dr	
C10	931202-6	HEX. NUT M5		1			
046		INC. 37					
047	266326-2	šroub 4x18=new265995-6		6			
048	922228-9	H.S.H.BOLT M5X18 WITH WR		1			
049	140T21-1	PIPE COMPLETE		1		trubka h	
C10	819N87-3	CAUTION LABEL		1			
C20	819312-8	MAKITA LOGO LABEL		1			
050	699090-4	POWER SUPPLY CORD UNIT		1		kabel	
051	346248-3	CLAMP 24		1		spona 24	
052	266326-2	šroub 4x18=new265995-6		1			
053	699149-7	POWER SUPPLY CORD UNIT		1		kabel	
054	183P07-8	HOUSING SET		1	*	obal=new183T27-6	
C10	263005-3	vymezovací čep 6		2	*		
054		INC. 58			*		
054-1	183T27-6	HOUSING SET		1	*	obal	
C10	263005-3	vymezovací čep 6		2	*		
C20	422749-6	RUBBER SHEET		1	*		
054-1		INC. 58			*		
054-2	1830T3-0	HOUSING SET	O	1			
C10	263005-3	vymezovací čep 6		2			
C20	422749-6	RUBBER SHEET		1			
054-2		INC. 58					
055	620C56-1	CONTROLLER		1	*	ovl	
055-1	620F98-3	CONTROLLER	<	1		ovlada	
056	266326-2	šroub 4x18=new265995-6		1			
057	687260-7	držák kabelu GA5020/6020/HR22 30		1		dr	
058	183P07-8	HOUSING SET		1	*	obal=new183T27-6	
C10	263005-3	vymezovací čep 6		2	*		
058		INC. 54			*		
058-1	183T27-6	HOUSING SET		1	*	obal	
C10	263005-3	vymezovací čep 6		2	*		
C20	422749-6	RUBBER SHEET		1	*		
058-1		INC. 54			*		
058-2	1830T3-0	HOUSING SET	O	1			
C10	263005-3	vymezovací čep 6		2			
C20	422749-6	RUBBER SHEET		1			
058-2		INC. 54					
059	266326-2	šroub 4x18=new265995-6		6			
060	644809-6	TERMINAL		1		kontakt	
062	857D04-5	DUR190L NAME PLATE		1			
063	857D09-5	DUR190L SERIAL NO. LABEL		1			
A01	125516-5	BAND ASSEMBLY		1			
A05	198893-8	CUTTER ASSEMBLY 95-M10L SET ME		1			
C10	144259-0	SPOOL COVER COMPLETE		1			

C20	232289-4	COMPRESSION SPRING 15		1		
C30	456640-6	SPOOL HOLDER		1		
C40	456642-2	SPOOL		1	c	
A05	191D89-4	TRIMMER HEAD 96-M10L SET		1		
A06	831304-7	ACCESSORY BAG		1		
A07	450128-8	kryt baterie		2		
A08	197280-8	BATTERY BL1850B SET		2		
A09	***DC18RC	DC18RC FAST CHARGER		1		
A09		COMPO-PARTS				
A12	783202-0	klíč inbus 4		1	kl	
E01	807949-3	SOUND 94DB LABEL		1	*	
E01-1	807E85-5	SOUND 92DB LABEL	<	1		
F47	1915D8-4	TRIMMER HEAD 96-M10L SET		1		
F48	1914R8-6	TRIMMER HEAD ASSEMBLY 98-M 10L		1		

Prosím uveďte objednáč. číslo dílu v objednávce

Datum tisku 24. 10. 2024