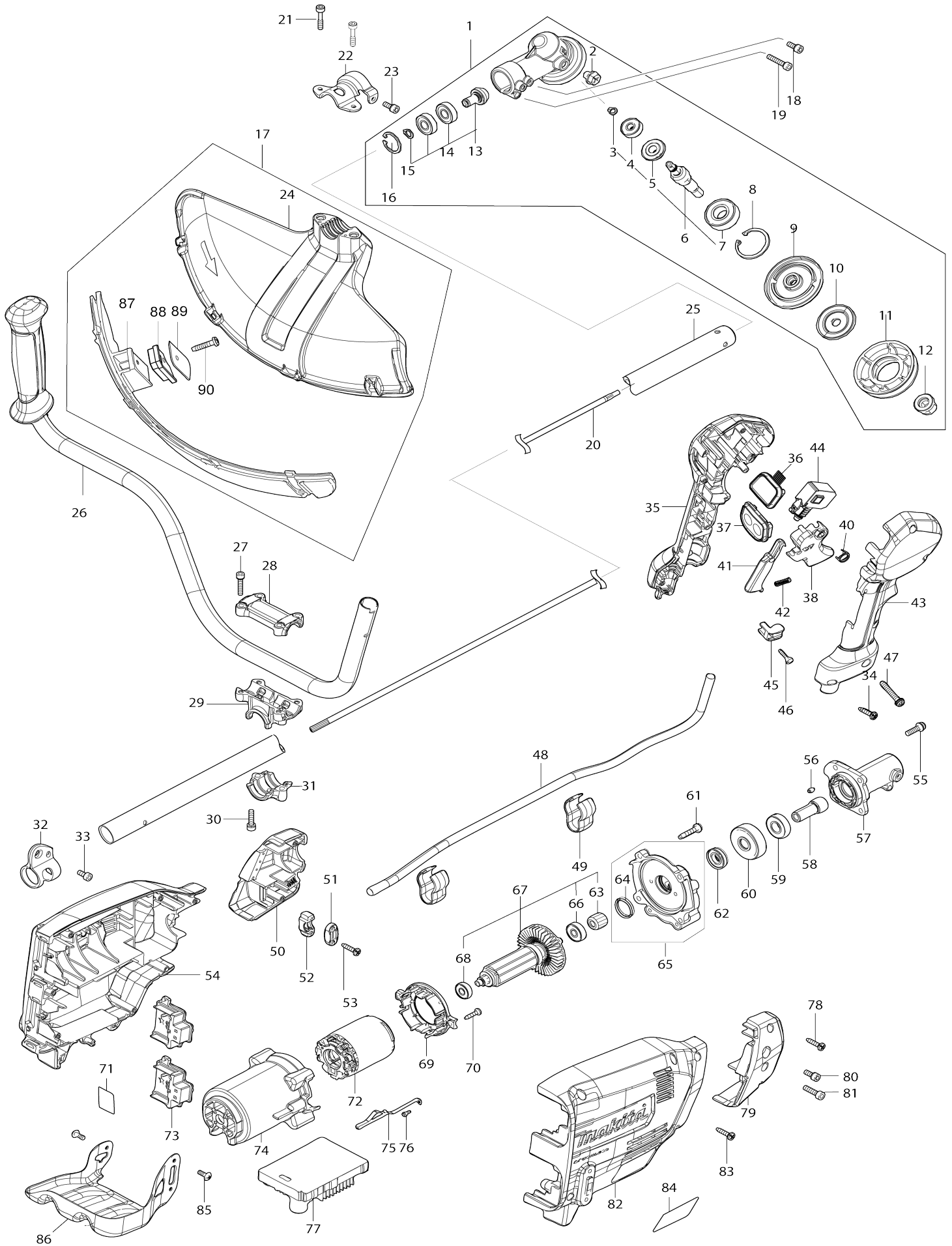


Model No.DUR369A CORDLESS GRASS TRIMMER



Model No.DUR369A CORDLESS GRASS TRIMMER

Obj. č.	Obj. č.	Popis	Možnost záměny	Množství	Nový/Starý	Poznámka 1	Poznámka 2
001	123853-1	GEAR CASE ASSEMBLY		1			
001		INC. 2-16					
002	265590-2	šroub zátka		1			
003	232350-7	RING SPRING 6		1		pru	
004	210030-5	ložisko MT811		1			
005	221484-1	SPIRAL BEVEL GEAR 19		1			
006	136233-2	CUTTER SHAFT ASS'Y		1		h	
006		INC. 3-5,7					
007	211228-7	kulič. ložisko 6202DDW = old 922117		1			
008	257432-4	RETAINING RING R-35		1		krou	
009	144312-2	RECEIVE WASHER COMPLETE		1		tal	
010	347104-0	CLAMP WASHER		1		podlo	
011	457274-8	CUP US		1		v	
012	252236-9	HEX. LOCK NUT M10-17		1		matka	
013	136235-8	SPIRAL BEVEL GEAR ASS'Y		1			
013		INC. 14,15					
014	210049-4	ložisko		2		lo	
015	257986-1	RETAINING RING (EXT) S-9		1		segrovka S-9= old961005-4	
016	257987-9	RETAINING RING (INT)R-24		1			
017	191B54-1	PROTECTOR U 430 SET MG		1			
017		INC. 24,87-90					
018	922216-6	imbus M5x14		1		imbus M5x14	
019	922242-5	imbus M5x25		1		imbus M5x25	
020	327056-1	SHAFT		1		h	
021	251513-6	H.S.H.BOLT M5X25		2			
022	347107-4	PROTECTOR CLAMP 24		1		spona	
023	922216-6	imbus M5x14		1		imbus M5x14	
024	457271-4	PROTECTOR U 450		1		chr	
025	140M97-6	SHAFT PIPE COMPLETE A		1			
C10	819312-8	MAKITA LOGO LABEL		1			
C20	819N87-3	CAUTION LABEL		1			
026	140L83-1	HANDLE 19 COMPLETE		1		dr	
027	922241-7	HEX. SOCKET HEAD BOLT M5X25		4			
028	318272-6	HANDLE HOLDER 1		1		dr	
029	319705-4	HANDLE HOLDER		1		dr	
030	922241-7	HEX. SOCKET HEAD BOLT M5X25		2			
031	319703-8	PIPE CLAMP		1		spona trubky	
032	347116-3	HANGER		1		dr	
033	922212-4	imbus M5x12		1		imbus M5x12	
034	266326-2	šroub 4x18=new265995-6		5			
035	183L61-8	GRIP SET		1		dr	
C10	252180-0	HEX. LOCK NUT M5-8		1			
035		INC. 43					
036	140K37-2	INDICATION CIRCUIT COMPLETE E		1		okruh	
037	140K35-6	SWITCH CIRCUIT COMPLETE G		1		okruh	
C10	819J26-9	SWITCH LABEL		1			

038	459145-5	SWITCH LEVER		1		p	
040	233540-5	TORSION SPRING 11		1		pru	
041	459146-3	LOCK OFF LEVER		1		p	
042	233101-1	vinutá pružina 4		1		vinut	
043	183L61-8	GRIP SET		1		dr	
C10	252180-0	HEX. LOCK NUT M5-8		1			
043		INC. 35					
044	651436-2	SWITCH C3JW-1A-P-2		1		vyp	
045	687260-7	držák kabelu GA5020/6020/HR22 30		1		dr	
046	266326-2	šroub 4x18=new265995-6		1			
047	911258-5	šroub M5x35 = old 290028		1			
048	699132-4	POWER SUPPLY CORD UNIT		1		kabel	
049	457458-8	CLAMP		2		spona	
050	183N25-4	HOUSING COVER SET		1		obal	
050		INC. 79					
051	687124-5	držák kabelu		1	*	dr	
051-1	687052-4	STRAIN RELIEF	O	1			
052	687051-6	svorka kabelu - nahrazuje 26104 1		1		svorka kabelu - nahra zuje 261041	
053	266326-2	šroub 4x18=new265995-6		2			
054	183N23-8	HOUSING SET		1		obal	
C10	263005-3	vymezovací čep 6		4			
C20	252126-6	HEX. LOCK NUT M4-7		3		matka	
054		INC. 82					
055	911233-1	šroub M5x20		4			
056	263002-9	vymezovací čep 4		1			
057	319919-5	PIPE BRACKET		1			
058	325811-5	SPINDLE HUB		1		v	
059	211131-2	kuličkové ložisko 6001DDW =old 922041		1		lo	
060	226931-7	HELICAL GEAR 29		1		ozuben	
061	266459-3	TAPPING SCREW 5X25		4			
062	211150-8	ložisko 6935FD		1			
063	226932-5	HELICAL GEAR 10		1			
064	213961-7	O RING 22		1			
065	136230-8	GEAR BOX ASS'Y		1		p	
065		INC. 64					
066	210005-4	kulič. ložisko 608DDW = old 2110 31-6		1		kuli	
067	519587-6	ROTOR ASS'Y		1		rotor	
067		INC. 63,66,68					
068	210062-2	ložisko MT952		1		kuli	
069	459764-7	BAFFLE PLATE		1		deska	
070	266326-2	šroub 4x18=new265995-6		2			
071	856H96-5	DUR369A SERIAL NO. LABEL		1			
072	629443-3	STATOR		1	*	stator	
072-1	629471-8	STATOR	O	1	*		
072-2	629C13-6	STATOR	S	1		stator	
073	644809-6	TERMINAL		2		kontakt	
074	459763-9	MOTOR HOUSING		1		obal motoru	
075	347620-2	PLATE		1	*	deska	
075-1	654887-8	EARTH PLATE	O	1		deska =old 347620-2	

076	911102-6	PAN HEAD SCREW M4X6		1		
077	620C08-2	CONTROLLER		1		ovl
078	266326-2	šroub 4x18=new265995-6		2		
079	183N25-4	HOUSING COVER SET		1		obal
079		INC. 50				
080	922211-6	H.S.H.BOLT M5X12 WITH W		1	*	
080-1	922216-6	imbus M5x14	O	1		imbus M5x14
081	922233-6	H.S.H.BOLT M5X20 WITH WR		1		
082	183N23-8	HOUSING SET		1		obal
C10	263005-3	vymezovací čep 6		4		
C20	252126-6	HEX. LOCK NUT M4-7		3		matka
082		INC. 54				
083	266326-2	šroub 4x18=new265995-6		7		
084	856H88-4	DUR369A NAME PLATE		1		
085	251314-2	028078		3		
086	347563-8	BATTERY GUARD		1		chr
087	144316-4	PROTECTOR U EXT. 420-450 COM P		1		chr
C10	346696-6	HOOK		2		
C20	232284-4	LEAF SPRING		2		
088	459765-5	CUTTER EXTENSION		1		
089	347115-5	CUTTER		1		n
090	266459-3	TAPPING SCREW 5X25		1		
091	620L68-8	CONTROLLER B	S	1		
092	638A31-1	LEAD UNIT	S	1		dr
093	652119-7	PAN HEAD SCREW M2X6	S	6		
A01	122906-3	BAND ASSY		1		
A02	197993-1	TRIMMER HEAD 95-M10L SET ME		1		
C10	456640-6	SPOOL HOLDER		1		
C20	232289-4	COMPRESSION SPRING 15		1		
C30	144259-0	SPOOL COVER COMPLETE		1		
C40	456642-2	SPOOL		1		c
A03	126642-3	PLASTIC BLADE ASSEMBLY255-M 10L		1		
A04	144392-8	TOOL COVER 2T		1		
A05	198345-9	CUTTER BLADE 255-2 SET ME		1		
A06	782238-6	BOX WRENCH 17		1		
A07	783202-0	klíč inbus 4		1		kl
A08	831304-7	ACCESSORY BAG		1		
A10	197280-8	BATTERY BL1850B SET		2		
A11	***DC18RD	DC18RD TWO PORT FAST CHARGER		1		
A11		COMPO-PARTS				
F14	1912L4-0	PROTECTOR 225 SET MG		1		
F17	197472-9	NYLON CORD 2.0-15M SET		1		
F18	197473-7	NYLON CORD 2.0-30M SET		1		
F19	197474-5	NYLON CORD 2.0-160M SET		1		
F20	197475-3	NYLON CORD 2.0-280M SET		1		
F26	199868-0	PLASTIC BLADE 305 SET MG		1		
F27	199870-3	PLASTIC BLADE 305 BLADE SET MG		1		
F28	198266-5	TRIMMER HEAD 110-M10L SET ME		1		

F34	198502-9	NYLON CORD 2.4-30M SET		1		
F35	198503-7	NYLON CORD 2.4-120M SET		1		
F36	198504-5	NYLON CORD 2.4-180M SET		1		
F39	199378-7	BAND ASSEMBLY SET		1		
F40-1	199450-5	GREASE VESSEL SET	O	1		
F45	1915D7-6	TRIMMER HEAD 96-M10L SET		1		
F46	1914R6-0	TRIMMER HEAD ASSEMBLY 98-M 10L		1		
F47	1915D8-4	TRIMMER HEAD 96-M10L SET		1		
F48	1914R8-6	TRIMMER HEAD ASSEMBLY 98-M 10L		1		

Prosím uveďte objednáací číslo dílu v objednávce

Datum tisku 24. 10. 2024