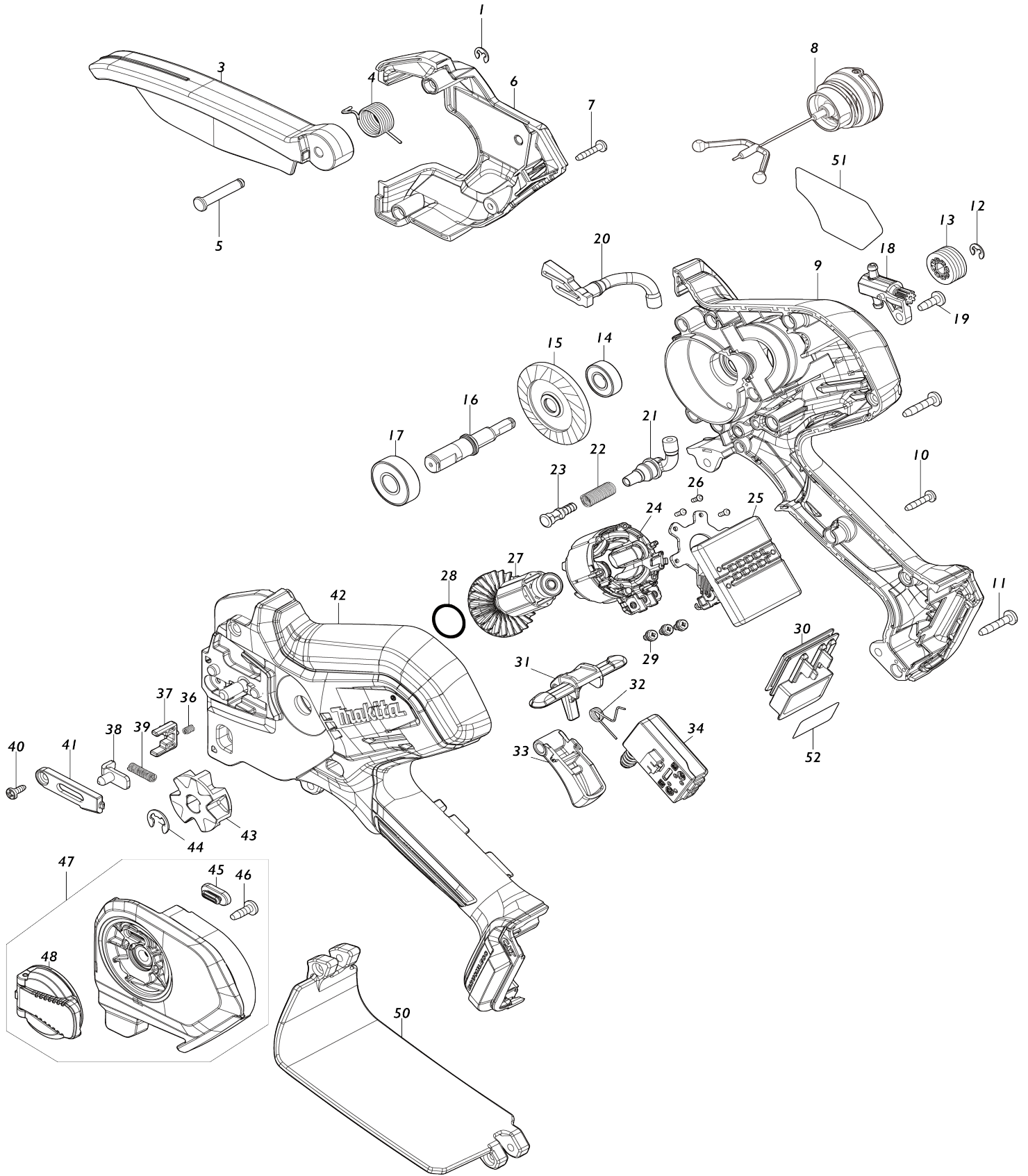


# Model No. UC100D 100MM CORDLESS CHAIN SAW



**Model No.UC100D 100MM CORDLESS CHAIN SAW**

Obj. č.	Obj. č.	Popis	Možn ost zá měny	Množ ství	Nový/ Starý	Poznámka 1	Poznámka 2
001	961011-9	zajišťovací kroužek		1		zaji	
003	413M04-5	SAFETY COVER		1		kryt	
004	232785-2	TORSION SPRING 14		1		pru	
005	256A31-5	SHOULDER PIN 5		1			
006	413L96-8	HOUSING R COVER		1		obal	
007	266429-2	TAPPING SCREW 3X16		3			
008	126832-8	TANK CAP ASSEMBLY		1		v	
C10	213894-6	O-RING 25		1	*		
C11	213A11-4	O-RING 25	O	1			
009	183Y30-7	HOUSING SET		1		obal	
C10	263002-9	vymezovací čep 4		2			
C20	347A70-7	TANK GUARD		1			
009		INC. 42					
010	266429-2	TAPPING SCREW 3X16		10			
011	911138-5	P.H.SCREW M4X20 WITH WR		2			
012	961011-9	zajišťovací kroužek		1		zaji	
013	226884-0	WORM GEAR		1		p	
014	211166-3	BALL BEARING 698DDW		1		lo	
015	227A17-6	SPIRAL BEVEL GEAR 53		1		ozuben	
016	327A89-2	SPINDLE		1		v	
017	210059-1	BALL BEARING 6000DDW		1			
018	141N25-0	OIL PUMP COMPLETE		1		olejov	
019	266427-6	TAPPING SCREW 4X12		1			
020	422968-4	OIL TUBE 3-60		1		hadi	
021	422969-2	OIL TUBE 3-25		1		hadi	
022	232774-7	COMPRESSION SPRING 6		1		pru	
023	413L02-3	NIPPLE		1		knofl	
024	629B91-0	STATOR		1		stator	
025	620M05-8	CONTROLLER		1		ovl	
026	266490-9	TAPPING SCREW PT 2X6		3	*		
026-1	265C47-1	TAPPING SCREW PT 2X6	O	3			
027	619791-8	ROTOR		1		rotor	
028	213A05-9	O-RING16		1		o krou	
029	652069-6	FLAT HEAD SCREW M3X6		3			
030	644813-5	TERMINAL		1		terminal	
031	413L98-4	LOCK OFF LEVER		1		p	
032	232784-4	TORSION SPRING 6		1		pru	
033	413L97-6	SWITCH LEVER		1		p	
034	650033-1	SWITCH C3XA-3SPM-1		1		vp	
036	233211-4	Compression Spring 2		1		pru	
037	413M02-9	STOPPER		1		doraz	
038	347A69-2	TENSION SLIDE		1		kluz	
039	232787-8	COMPRESSION SPRING 4		1		pru	
040	266492-5	šroubek		1			
041	413M03-7	COVER		1		kryt	
042	183Y30-7	HOUSING SET		1		obal	
C10	263002-9	vymezovací čep 4		2			
C20	347A70-7	TANK GUARD		1			

042		INC. 9				
043	227947-5	SPROCKET 7		1	*	
043-1	1911W5-9	SPROCKET 7 SET	O	1		
044	961013-5	zajišťovací kroužek		1		zaji
045	422970-7	GROMMET		1		
046	266427-6	TAPPING SCREW 4X12		1		
047	136914-8	SPROCKET COVER ASS'Y		1	*	kryt=new137203-4
047		INC. 45,46,48			*	
047-1	137203-4	SPROCKET COVER ASS'Y	<	1		
047-1		INC. 45,46,48				
048	141M77-5	NUT COMPLETE		1	*	
048-1	1410X3-4	NUT COMPLETE	<	1		
050	141M76-7	REAR HAND GUARD COMPLETE		1		zadn
C10	8062G7-3	CAUTION LABEL		1		
051	8584L7-6	UC100D NAME PLATE		1		
052	8584M5-7	UC100D SERIAL NO. LABEL		1		
053	8085Y3-1	INDICATION LABEL		1		
A01	1910W0-3	GUIDE BAR 4 SET		1	*	
A01-1	1910W0-3	GUIDE BAR 4 SET	O	1		
A02	198457-8	CHAIN EDGER SET		1	*	
A02-1	D-70948	FILE HOLDER SET 4.0MM(5/32")	O	1		
A03	199897-3	OIL VESSEL SET		1		
A04	413M40-1	GUIDE BAR CASE 125		1		
A05	1910V6-4	SAW CHAIN 4 SET		1		
A06	456128-6	BATTERY COVER		1		
A07	***DC10WD	DC10WD BATTERY CHARGER		1		
A07		COMPO-PARTS				
A08	197396-9	BATTERY BL1021B SET		1		
E01	807950-8	SOUND 95DB LABEL		1		

Prosím uveďte objednáací číslo dílu v objednávce

Datum tisku 06. 11. 2024