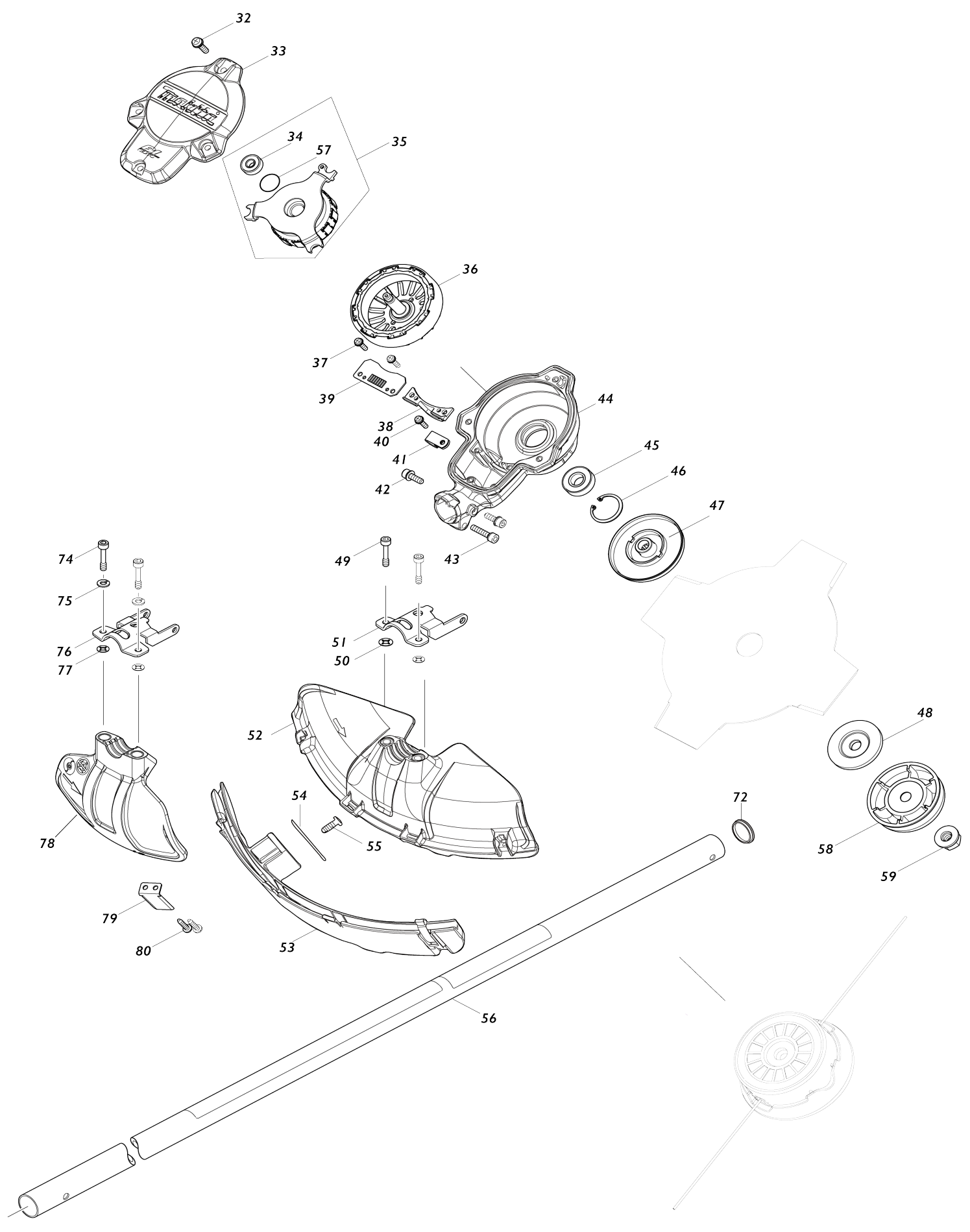




# Model No.UR002G CORDLESS GRASS TRIMMER



# Model No.UR002G CORDLESS GRASS TRIMMER

Obj. č.	Obj. č.	Popis	Možn ost zá měny	Množ ství	Nový/ Starý	Poznámka 1	Poznámka 2
001	140L83-1	HANDLE 19 COMPLETE		1	*	dr	
001-1	141E67-0	HANDLE 19 L COMPLETE	<	1		dr	
003	922241-7	HEX. SOCKET HEAD BOLT M5X25		4	*		
003-1	922241-7	HEX. SOCKET HEAD BOLT M5X25	<	2			
004	318272-6	HANDLE HOLDER 1		1	*	dr	
004-1	141D69-0	UPPER HANDLE HOLDER19 COM PLETE	<	1		dr	
005	318273-4	HANDLE HOLDER 2		1	*		
005-1	312B65-5	UPPER PIPE HOLDER 24	<	1		dr	
006	318274-2	HANDLE HOLDER 3		1	*		
006-1	312B66-3	LOWER PIPE HOLDER 24	<	1		dr	
007	922241-7	HEX. SOCKET HEAD BOLT M5X25		2	*		
007-1	922251-4	HEX. SOCKET HEAD BOLT M5X30	<	2			
008	699132-4	POWER SUPPLY CORD UNIT		1	*	kabel	
008-1	699172-2	POWER SUPPLY CORD UNIT	<	1			
C10	688163-8	filtr		1		filtr AH3756 DCU180 DHS630 DHS710 DLM 460 DSS610 DTW190 DUH551 DUH651	
009	266326-2	šroub 4x18=new265995-6		1			
010	687260-7	držák kabelu GA5020/6020/HR22 30		1		dr	
011	688163-8	filtr		1		filtr AH3756 DCU180 DHS630 DHS710 DLM 460 DSS610 DTW190 DUH551 DUH651	
012	183S35-1	HOUSING COVER SET		1		obal	
012		INC. 13					
013	183S35-1	HOUSING COVER SET		1		obal	
013		INC. 12					
014	699159-4	POWER SUPPLY CORD UNIT		1		kabel	
015	183S34-3	HOUSING SET		1		obal stroje	
C10	263005-3	vymezovací čep 6		2			
015		INC. 23					
016	687051-6	svorka kabelu - nahrazuje 26104 1		1		svorka kabelu - nahra zuje 261041	
017	346248-3	CLAMP 24		1		spona 24	
018	266326-2	šroub 4x18=new265995-6		1			
019	687124-5	držák kabelu		1		dr	
020	266326-2	šroub 4x18=new265995-6		2			
021	620E46-6	CONTROLLER		1	*	ovl	
021-1	620J65-2	CONTROLLER	S	1	*	ovl	
021-2	620K61-6	CONTROLLER	S	1			
022	632P49-4	TERMINAL UNIT		1		termin	
023	183S34-3	HOUSING SET		1		obal stroje	
C10	263005-3	vymezovací čep 6		2			
023		INC. 15					
024	811A45-7	UR002G NAME PLATE		1			
025	266326-2	šroub 4x18=new265995-6		7			
026	422230-7	CAP		1			
027	266420-0	TAPPING SCREW 5X20		2			

028	347752-5	BATTERY GUARD		1		kryt	
029	347116-3	HANGER		1		dr	
030	922212-4	imbus M5x12		1		imbus M5x12	
031	457458-8	CLAMP		2		spona	
032	911233-1	šroub M5x20		4			
033	413335-4	TOP COVER		1		kryt	
034	210062-2	ložisko MT952		1		kuli	
035	529146-8	STATOR ASS'Y		1	*	stator=new520136-4	
035		INC. 34,57			*		
035-1	520136-4	STATOR ASS'Y	S	1	*	stator=new520135-6	
035-1		INC. 34,57			*		
035-2	520152-6	STATOR ASS'Y	S	1			
035-2		INC. 34,57					
036	619462-7	ROTOR		1		rotor DUR365 DUR366 DUR368	
037	911128-8	P.H.SCREW M4X16 WITH WR		2			
038	455628-3	INNER COVER		1		kryt	
039	620E48-2	CONTROLLER B		1	*	ovl	
039-1	620J62-8	CONTROLLER B	S	1		ovl	
040	911128-8	P.H.SCREW M4X16 WITH WR		1			
041	687042-7	držák kabelu		1		podp	
042	922223-9	H.S.H.BOLT M5X16 WITH WR		2			
043	922241-7	HEX. SOCKET HEAD BOLT M5X25		1			
044	141A05-8	MOTOR HOUSING COMPLETE		1		obal motoru	
045	211131-2	kuličkové ložisko 6001DDW =old 922041		1		lo	
046	962106-1	RETAINING RING R-28		1		krou	
047	140L84-9	RECEIVE WASHER COMPLETE G		1		podlo	
048	346084-7	podložka MS335.4U		1			
049	266896-1	HEX. SOCKET HEAD BOLT M5X20		2			
050	261156-6	POLYPROPYLENE WASHER 4		2		podlo	
051	346785-7	PROTECTOR CLAMP		1		spona DUR365	
052	413336-2	PROTECTOR		1		chr	
053	141A09-0	PROTECTOR U EXT. 350 COMPLETE		1		chr	
054	347115-5	CUTTER		1		n	
055	266388-0	TAPPING SCREW 5X16		1			
056	141B05-4	PIPE COMPLETE O		1		trubka	
C10	819312-8	MAKITA LOGO LABEL		1			
C20	819J22-7	CAUTION LABEL		1			
057	213325-5	O RING 19		1		o krou	
058	168526-9	miska MS335.4U		1		miska MS335.4U	
059	264025-0	matka		1		matka	
060	183564-4	GRIP SET		1		dr	
C10	252180-0	HEX. LOCK NUT M5-8		1			
060		INC. 67					
061	459146-3	LOCK OFF LEVER		1		p	
062	233101-1	vinutá pružina 4		1		vinut	
063	651492-2	SWITCH C3JR-1A-PAXD3		1		vyp	
064	459145-5	SWITCH LEVER		1		p	
065	233540-5	TORSION SPRING 11		1		pru	
066	141B31-3	INDICATION CIRCUIT COMPLETE		1		ukazatel	

067	183S64-4	GRIP SET		1		dr	
C10	252180-0	HEX. LOCK NUT M5-8		1			
067		INC. 60					
068	911258-5	šroub M5x35 = old 290028		1			
069	266326-2	šroub 4x18=new265995-6		5			
070	140W06-5	SWITCH CIRCUIT COMPLETE G		1			
C10	819J26-9	SWITCH LABEL		1			
071	8012U4-2	XGT LOGO LABEL		1			
072	422727-6	RUBBER CAP 24		1		v	
073	811A49-9	UR002G SERIAL NO. LABEL		1			
081	213960-9	o-kroužek 9554-9558NB		1		o-krou	
082	162965-5	KNOB 57		1		knofl	
083	253047-5	FLAT WASHER 6		1		podlo	
084	312B85-9	LOWER HANDLE HOLDER 19		1		dr	
085	263005-3	vymezovací čep 6		2			
086	327861-6	HANDLE 19 R		1		dr	
A01	122906-3	BAND ASSY		1			
A02	198893-8	CUTTER ASSEMBLY 95-M10L SET ME		1			
A03	783013-3	BOX DRIVER 16-17		1			
A04	783202-0	klíč inbus 4		1		kl	
A05	831304-7	ACCESSORY BAG		1			
A06	456924-2	TOOL COVER		1			
A08	195150-5	CUTTER BLADE SET		1			
A09	126642-3	PLASTIC BLADE ASSEMBLY255-M 10L		1			
E01	8030T4-9	SOUND XXDB LABEL		1	*		
E01-1	807E85-5	SOUND 92DB LABEL	<	1			
F09	197472-9	NYLON CORD 2.0-15M SET		1			
F10	197473-7	NYLON CORD 2.0-30M SET		1			
F11	197474-5	NYLON CORD 2.0-160M SET		1			
F12	197475-3	NYLON CORD 2.0-280M SET		1			
F17	198502-9	NYLON CORD 2.4-30M SET		1			
F18	198503-7	NYLON CORD 2.4-120M SET		1			
F19	198504-5	NYLON CORD 2.4-180M SET		1			
F47	1915D8-4	TRIMMER HEAD 96-M10L SET		1			
F48	1914R8-6	TRIMMER HEAD ASSEMBLY 98-M 10L		1			

Prosím uveďte objednáčíslo dílu v objednávce

Datum tisku 06. 11. 2024