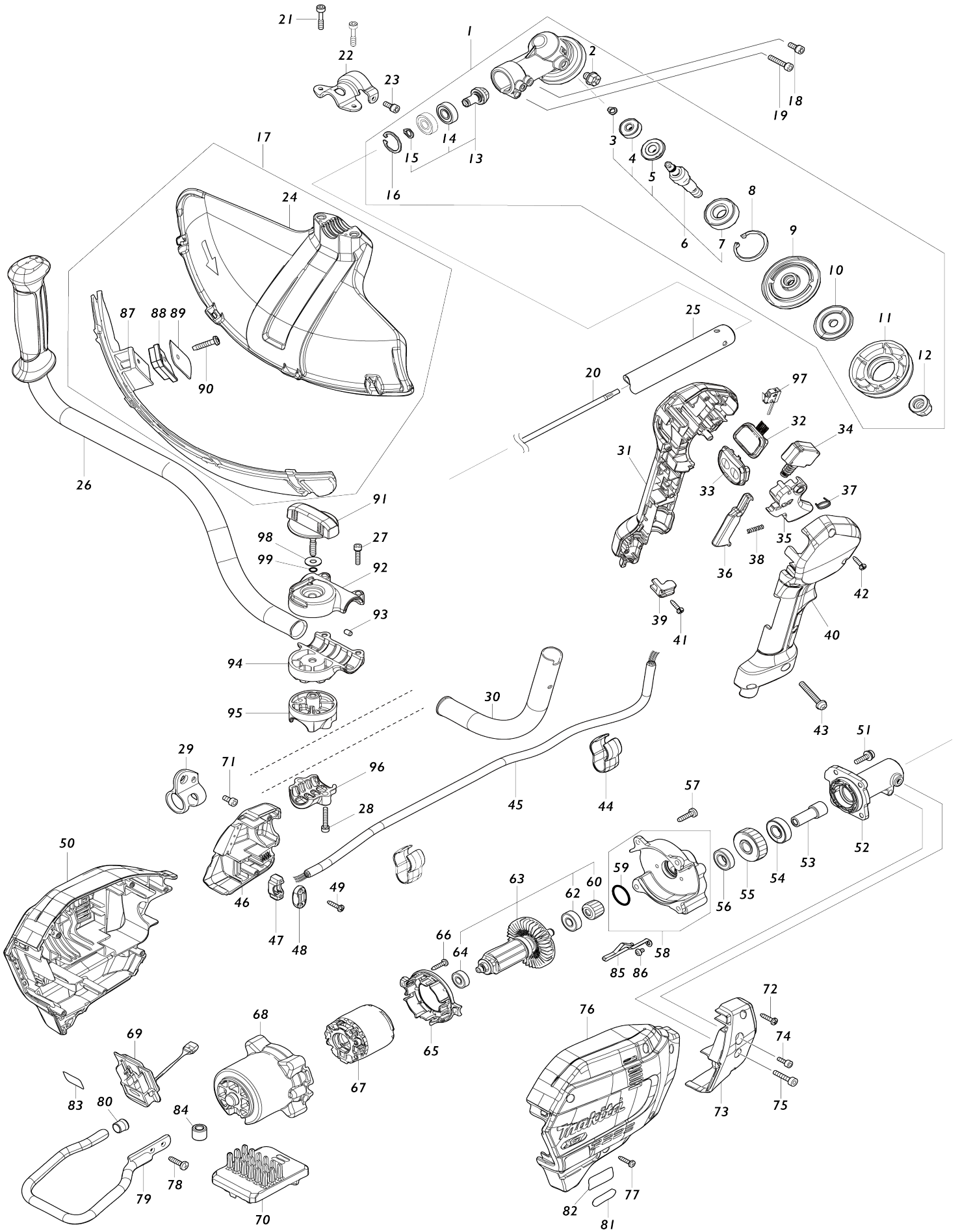


Model No.UR006G CORDLESS GRASS TRIMMER



Model No.UR006G CORDLESS GRASS TRIMMER

Obj. č.	Obj. č.	Popis	Možnost záměny	Množství	Nový/Stary	Poznámka 1	Poznámka 2
001	123853-1	GEAR CASE ASSEMBLY		1			
001		INC. 2,6,8-13,16					
002	265590-2	šroub zátka		1			
003	232350-7	RING SPRING 6		1		pru	
004	210030-5	ložisko MT811		1			
005	221484-1	SPIRAL BEVEL GEAR 19		1			
006	136233-2	CUTTER SHAFT ASS'Y		1		h	
006		INC. 3-5,7					
007	211228-7	kulič. ložisko 6202DDW = old 922117		1			
008	257432-4	RETAINING RING R-35		1		krou	
009	144312-2	RECEIVE WASHER COMPLETE		1		tal	
010	347104-0	CLAMP WASHER		1		podlo	
011	457274-8	CUP US		1		v	
012	252236-9	HEX. LOCK NUT M10-17		1		matka	
013	136235-8	SPIRAL BEVEL GEAR ASS'Y		1			
013		INC. 14,15					
014	210049-4	ložisko		2		lo	
015	257986-1	RETAINING RING (EXT) S-9		1		segrovka S-9= old961005-4	
016	257987-9	RETAINING RING (INT)R-24		1			
017	191B54-1	PROTECTOR U 430 SET MG		1			
017		INC. 24,87-90					
018	922216-6	imbus M5x14		1		imbus M5x14	
019	922242-5	imbus M5x25		1		imbus M5x25	
020	327056-1	SHAFT		1		h	
021	251513-6	H.S.H.BOLT M5X25		2			
022	347107-4	PROTECTOR CLAMP 24		1		spona	
023	922216-6	imbus M5x14		1		imbus M5x14	
024	457271-4	PROTECTOR U 450		1		chr	
025	140S82-5	SHAFT PIPE COMPLETE I		1			
C10	819312-8	MAKITA LOGO LABEL		1			
C20	819J22-7	CAUTION LABEL		1			
026	141D27-6	HANDLE 22L COMPLETE		1		dr	
C10	273014-4	GRIP 36		1			
027	922241-7	HEX. SOCKET HEAD BOLT M5X25		2			
028	922251-4	HEX. SOCKET HEAD BOLT M5X30		2			
029	347116-3	HANGER		1		dr	
030	327837-3	HANDLE 22 R		1		dr	
031	183T68-2	GRIP SET		1		dr	
C10	252180-0	HEX. LOCK NUT M5-8		1			
031		INC. 40					
032	141D25-0	INDICATION CIRCUIT COMPLETE E		1			
033	140W06-5	SWITCH CIRCUIT COMPLETE G		1			
C10	819J26-9	SWITCH LABEL		1			
034	651492-2	SWITCH C3JR-1A-PAXD3		1		vyp	
035	459145-5	SWITCH LEVER		1		p	
036	459146-3	LOCK OFF LEVER		1		p	

037	233540-5	TORSION SPRING 11		1		pru	
038	233101-1	vinutá pružina 4		1		vinut	
039	687260-7	držák kabelu GA5020/6020/HR22 30		1		dr	
040	183T68-2	GRIP SET		1		dr	
C10	252180-0	HEX. LOCK NUT M5-8		1			
040		INC. 31					
041	266326-2	šroub 4x18=new265995-6		1			
042	266326-2	šroub 4x18=new265995-6		5			
043	911258-5	šroub M5x35 = old 290028		1			
044	457458-8	CLAMP		2		spona	
045	699165-9	POWER SUPPLY CORD UNIT		1		kabel	
046	183N25-4	HOUSING COVER SET		1		obal	
046		INC. 73					
047	687051-6	svorka kabelu - nahrazuje 26104 1		1		svorka kabelu - nahra zuje 261041	
048	687124-5	držák kabelu		1		dr	
049	266326-2	šroub 4x18=new265995-6		2			
050	183S87-2	HOUSING SET		1		obal	
C10	263005-3	vymezovací čep 6		2			
050		INC. 76					
051	911233-1	šroub M5x20		4			
052	140Y38-4	PIPE BRACKET COMPLETE		1		podp	
C10	263002-9	vymezovací čep 4		1			
053	325811-5	SPINDLE HUB		1		v	
054	211131-2	kuličkové ložisko 6001DDW =old 922041		1		lo	
055	227848-7	HELICAL GEAR 33		1			
056	211150-8	ložisko 6935FD		1			
057	266420-0	TAPPING SCREW 5X20		4			
058	136368-9	GEAR BOX ASSY		1		p	
058		INC. 59					
059	213961-7	O RING 22		1			
060	227834-8	HELICAL GEAR 16		1			
062	210005-4	kulič. ložisko 608DDW = old 2110 31-6		1		kuli	
063	519647-4	ROTOR ASS'Y		1		rotor cpl.	
063		INC. 60,62,64					
064	210062-2	ložisko MT952		1		kuli	
065	459764-7	BAFFLE PLATE		1		deska	
066	266326-2	šroub 4x18=new265995-6		2			
067	629A25-7	STATOR		1		stator	
068	412961-6	MOTOR HOUSING		1		obal motoru	
069	632P49-4	TERMINAL UNIT		1		termin	
070	620F24-2	CONTROLLER		1		elektronika UR006G	
071	922212-4	imbus M5x12		1		imbus M5x12	
072	266326-2	šroub 4x18=new265995-6		2			
073	183N25-4	HOUSING COVER SET		1		obal	
073		INC. 46					
074	922211-6	H.S.H.BOLT M5X12 WITH W		1	*		
074-1	922216-6	imbus M5x14	O	1		imbus M5x14	
075	922233-6	H.S.H.BOLT M5X20 WITH WR		1			
076	183S87-2	HOUSING SET		1		obal	

C10	263005-3	vymezovací čep 6		2			
076		INC. 50					
077	266326-2	šroub 4x18=new265995-6		6			
078	266420-0	TAPPING SCREW 5X20		2			
079	347752-5	BATTERY GUARD		1		kryt	
080	422230-7	CAP		1			
081	8025F3-0	XGT LOGO LABEL		1			
082	811X73-0	UR006G NAME PLATE		1			
083	811X79-8	UR006G SERIAL NO. LABEL		1			
084	688163-8	filtr		1		filtr AH3756 DCU180 DHS630 DHS710 DLM 460 DSS610 DTW190 DUH551 DUH651	
085	347751-7	PLATE		1	*	deska	
085-1	654886-0	EARTH PLATE	O	1		deska =old 347751-7	
086	911102-6	PAN HEAD SCREW M4X6		1			
087	144316-4	PROTECTOR U EXT. 420-450 COM P		1		chr	
C10	346696-6	HOOK		2			
C20	232284-4	LEAF SPRING		2			
088	459765-5	CUTTER EXTENSION		1			
089	347115-5	CUTTER		1		n	
090	266459-3	TAPPING SCREW 5X25		1			
091	162965-5	KNOB 57		1		knofl	
092	141D24-2	UPPER HANDLE HOLDER 22 COM P		1		horn	
C10	263005-3	vymezovací čep 6		1			
093	263005-3	vymezovací čep 6		2			
094	312B68-9	LOWER HANDLE HOLDER 22		1		spodn	
095	312B65-5	UPPER PIPE HOLDER 24		1		dr	
096	312B66-3	LOWER PIPE HOLDER 24		1		dr	
098	253047-5	FLAT WASHER 6		1		podlo	
099	213960-9	o-kroužek 9554-9558NB		1		o-krou	
A01	122A37-4	BAND ASSEMBLY		1			
A02	197993-1	TRIMMER HEAD 95-M10L SET ME		1			
C10	456640-6	SPOOL HOLDER		1			
C20	232289-4	COMPRESSION SPRING 15		1			
C30	144259-0	SPOOL COVER COMPLETE		1			
C40	456642-2	SPOOL		1		c	
A02	191D90-9	TRIMMER HEAD 96-M10L SET		1			
A02		COMPO-PARTS					
A03	126642-3	PLASTIC BLADE ASSEMBLY255-M 10L		1			
A04	144392-8	TOOL COVER 2T		1			
A05	198345-9	CUTTER BLADE 255-2 SET ME		1			
A06	782238-6	BOX WRENCH 17		1			
A07	783202-0	klíč inbus 4		1		kl	
A08	831304-7	ACCESSORY BAG		1			
A09	412393-7	BATTERY COVER		1			
A10	***DC40RA	DC40RA FAST CHARGER		1			
A10		COMPO-PARTS					
A11	191B26-6	BATTERY BL4040 SET		1			
E01	807811-2	SOUND 96DB LABEL		1			

F14	1912L4-0	PROTECTOR 225 SET MG		1		
F17	197472-9	NYLON CORD 2.0-15M SET		1		
F18	197473-7	NYLON CORD 2.0-30M SET		1		
F19	197474-5	NYLON CORD 2.0-160M SET		1		
F20	197475-3	NYLON CORD 2.0-280M SET		1		
F26	199868-0	PLASTIC BLADE 305 SET MG		1		
F27	199870-3	PLASTIC BLADE 305 BLADE SET MG		1		
F28	198266-5	TRIMMER HEAD 110-M10L SET ME		1		
F34	198502-9	NYLON CORD 2.4-30M SET		1		
F35	198503-7	NYLON CORD 2.4-120M SET		1		
F36	198504-5	NYLON CORD 2.4-180M SET		1		
F39	199378-7	BAND ASSEMBLY SET		1		
F40	199450-5	GREASE VESSEL SET		1		
F45	1915D7-6	TRIMMER HEAD 96-M10L SET		1		
F46	1914R6-0	TRIMMER HEAD ASSEMBLY 98-M10L		1		
F47	1915D8-4	TRIMMER HEAD 96-M10L SET		1		
F48	1914R8-6	TRIMMER HEAD ASSEMBLY 98-M10L		1		

Prosím uveďte objednáčíslo dílu v objednávce

Datum tisku 06. 11. 2024