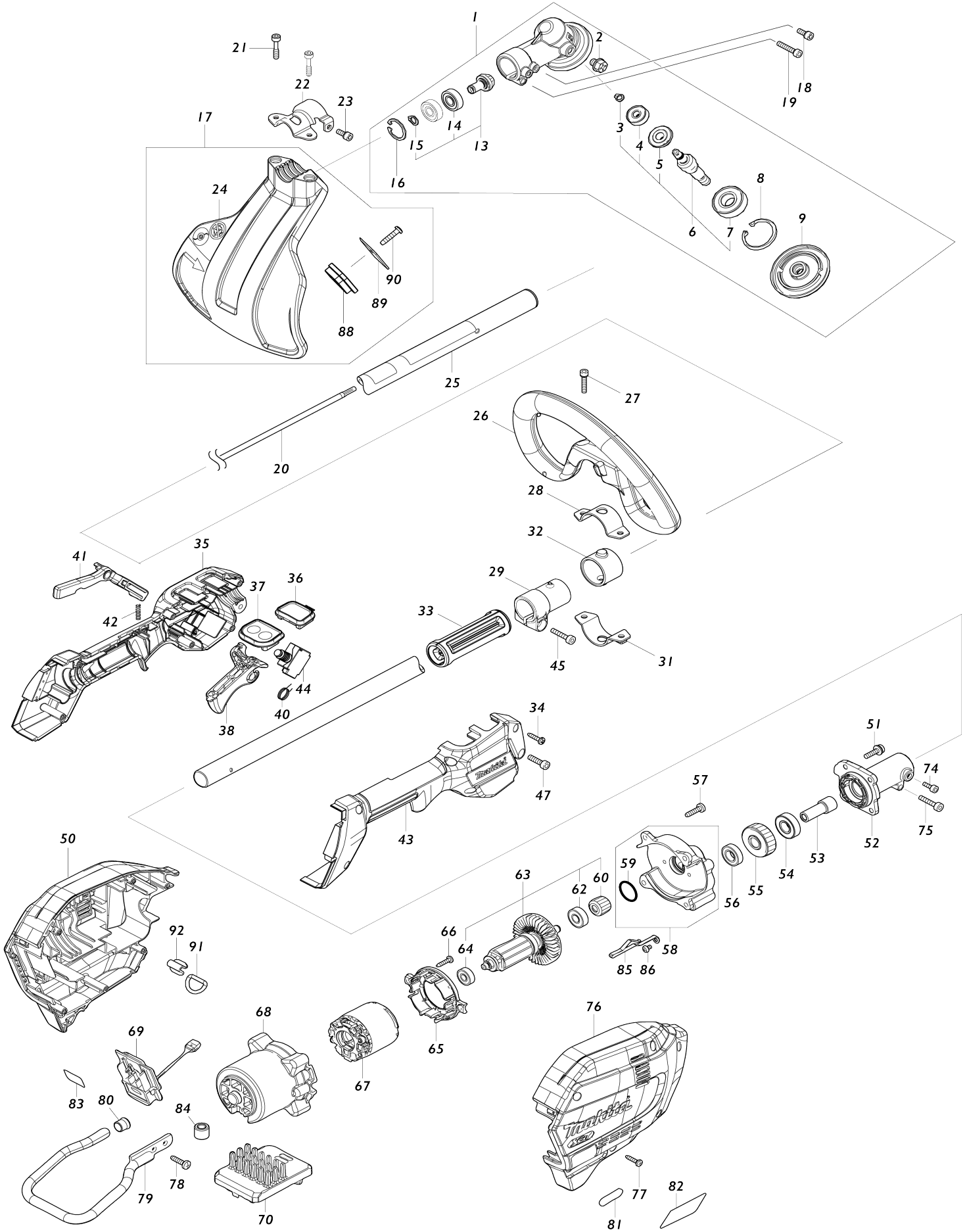


Model No.UR008G CORDLESS GRASS TRIMMER



Model No.UR008G CORDLESS GRASS TRIMMER

Obj. č.	Obj. č.	Popis	Možnost záměny	Množství	Nový/Stary	Poznámka 1	Poznámka 2
001	127380-0	GEAR CASE ASSEMBLY US		1			
001		INC. 2,6,8,9,13,16					
002	265590-2	šroub zátka		1			
003	259070-8	RETAINING RING (EXT) S-7		1			
004	210030-5	ložisko MT811		1			
005	226954-5	SPIRAL BEVEL GEAR 21		1			
006	136234-0	CUTTER SHAFT ASS'Y		1			
006		INC 3-5,7					
007	211228-7	kulič. ložisko 6202DDW = old 922117		1			
008	259069-3	RETAINING RING (INT) R-35		1			
009	140N88-3	RECEIVE WASHER COMPLETE		1			
013	136236-6	SPIRAL BEVEL GEAR ASS'Y		1			
013		INC. 14,15					
014	210049-4	ložisko		2		lo	
015	259071-6	RETAINING RING (EXT) S-9		1			
016	259072-4	RETAINING RING (INT)R-24		1			
017	191B55-9	PROTECTOR N 430 SET MG		1			
017		INC. 24,88-90					
018	922216-6	imbus M5x14		1		imbus M5x14	
019	922242-5	imbus M5x25		1		imbus M5x25	
020	327056-1	SHAFT		1		h	
021	251513-6	H.S.H.BOLT M5X25		2			
022	347107-4	PROTECTOR CLAMP 24		1		spona	
023	922216-6	imbus M5x14		1		imbus M5x14	
024	457273-0	PROTECTOR N 420-450		1			
025	140S83-3	SHAFT PIPE COMPLETE J		1			
C10	819312-8	MAKITA LOGO LABEL		1			
C20	8008K7-9	CAUTION LABEL		1			
026	457267-5	LOOP HANDLE		1		dr	
C10	263005-3	vymezovací čep 6		1			
027	922234-4	H.S.H.BOLT M5X20 WITH WG		2			
028	347113-9	UPPER CLAMP 35		1		spona	
029	457269-1	PIPE HOLDER 24		1		dr	
031	347114-7	LOWER CLAMP 35		1		spona	
032	424942-8	DAMPER		1		tlumi	
033	451601-1	SPACER 24		1			
034	266326-2	šroub 4x18=new265995-6		6			
035	183S36-9	GRIP SET		1		dr	
035		INC. 43					
036	141D25-0	INDICATION CIRCUIT COMPLETE E		1			
037	140W06-5	SWITCH CIRCUIT COMPLETE G		1			
C10	819J26-9	SWITCH LABEL		1			
038	459758-2	SWITCH LEVER		1		p	
040	233622-3	TORSION SPRING 12		1		pru	
041	459759-0	LOCK OFF LEVER		1		p	
042	233101-1	vinutá pružina 4		1		vinut	
043	183S36-9	GRIP SET		1		dr	

043		INC. 35				
044	651492-2	SWITCH C3JR-1A-PAXD3		1		vyp
045	922244-1	H.S.H.BOLT M5X25 WITH WG		1		
047	922233-6	H.S.H.BOLT M5X20 WITH WR		1		
050	183S87-2	HOUSING SET		1	*	obal
C10	263005-3	vymezovací čep 6		2	*	
050		INC. 76			*	
050-1	183R88-4	HOUSING SET	<	1		obal
C10	263005-3	vymezovací čep 6		2		
050-1		INC. 76				
051	911233-1	šroub M5x20		4		
052	140Y38-4	PIPE BRACKET COMPLETE		1		podp
C10	263002-9	vymezovací čep 4		1		
053	325811-5	SPINDLE HUB		1		v
054	211131-2	kuličkové ložisko 6001DDW =old 922041		1		lo
055	227848-7	HELICAL GEAR 33		1		
056	211150-8	ložisko 6935FD		1		
057	266420-0	TAPPING SCREW 5X20		4		
058	136368-9	GEAR BOX ASSY		1		p
058		INC. 59				
059	213961-7	O RING 22		1		
060	227834-8	HELICAL GEAR 16		1		
062	210005-4	kulič. ložisko 608DDW = old 2110 31-6		1		kuli
063	519647-4	ROTOR ASS'Y		1		rotor cpl.
063		INC. 60,62,64				
064	210062-2	ložisko MT952		1		kuli
065	459764-7	BAFFLE PLATE		1		deska
066	266326-2	šroub 4x18=new265995-6		2		
067	629A25-7	STATOR		1		stator
068	412961-6	MOTOR HOUSING		1		obal motoru
069	632P49-4	TERMINAL UNIT		1		termin
070	620F28-4	CONTROLLER		1		elektronika UR008G
074	922211-6	H.S.H.BOLT M5X12 WITH W		1	*	
074-1	922216-6	imbus M5x14	O	1		imbus M5x14
075	922233-6	H.S.H.BOLT M5X20 WITH WR		1		
076	183S87-2	HOUSING SET		1	*	obal
C10	263005-3	vymezovací čep 6		2	*	
076		INC. 50			*	
076-1	183R88-4	HOUSING SET	<	1		obal
C10	263005-3	vymezovací čep 6		2		
076-1		INC. 50				
077	266326-2	šroub 4x18=new265995-6		6		
078	266420-0	TAPPING SCREW 5X20		2		
079	347752-5	BATTERY GUARD		1		kryt
080	422230-7	CAP		1		
081	8025F3-0	XGT LOGO LABEL		1		
082	811Y17-6	UR008G NAME PLATE		1		
083	811Y21-5	UR008G SERIAL NO. LABEL		1		
084	688163-8	filtr		1		filtr AH3756 DCU180 DHS630 DHS710 DLM

						460 DSS610 DTW190 DUH551 DUH651	
085	347751-7	PLATE		1	*	deska	
085-1	654886-0	EARTH PLATE	O	1		deska =old 347751-7	
086	911102-6	PAN HEAD SCREW M4X6		1			
088	459765-5	CUTTER EXTENSION		1			
089	347115-5	CUTTER		1		n	
090	266459-3	TAPPING SCREW 5X25		1			
091	327742-4	D RING 20		1		krou	
092	347783-4	RING SUPPORT		1		podp	
A02	197993-1	TRIMMER HEAD 95-M10L SET ME		1			
C10	456640-6	SPOOL HOLDER		1			
C20	232289-4	COMPRESSION SPRING 15		1			
C30	144259-0	SPOOL COVER COMPLETE		1			
C40	456642-2	SPOOL		1		c	
A03	783202-0	klíč inbus 4		1		kl	
A04	831304-7	ACCESSORY BAG		1			
A05	127759-5	BAND ASSEMBLY L		1			
A09	412393-7	BATTERY COVER		1			
A10	***DC40RA	DC40RA FAST CHARGER		1			
A10		COMPO-PARTS					
A11	191B26-6	BATTERY BL4040 SET		1			
E01	807949-3	SOUND 94DB LABEL		1			
F09	197472-9	NYLON CORD 2.0-15M SET		1			
F10	197473-7	NYLON CORD 2.0-30M SET		1			
F11	197474-5	NYLON CORD 2.0-160M SET		1			
F12	197475-3	NYLON CORD 2.0-280M SET		1			
F15	198266-5	TRIMMER HEAD 110-M10L SET M E		1			
F19	198502-9	NYLON CORD 2.4-30M SET		1			
F20	198503-7	NYLON CORD 2.4-120M SET		1			
F21	198504-5	NYLON CORD 2.4-180M SET		1			
F23	199450-5	GREASE VESSEL SET		1			
F25	199868-0	PLASTIC BLADE 305 SET MG		1			
F26	199870-3	PLASTIC BLADE 305 BLADE SET MG		1			
F45	1915D7-6	TRIMMER HEAD 96-M10L SET		1			
F46	1914R6-0	TRIMMER HEAD ASSEMBLY 98-M 10L		1			
F47	1915D8-4	TRIMMER HEAD 96-M10L SET		1			
F48	1914R8-6	TRIMMER HEAD ASSEMBLY 98-M 10L		1			

Prosím uveďte objednáč. číslo dílu v objednávce

Datum tisku 06. 11. 2024