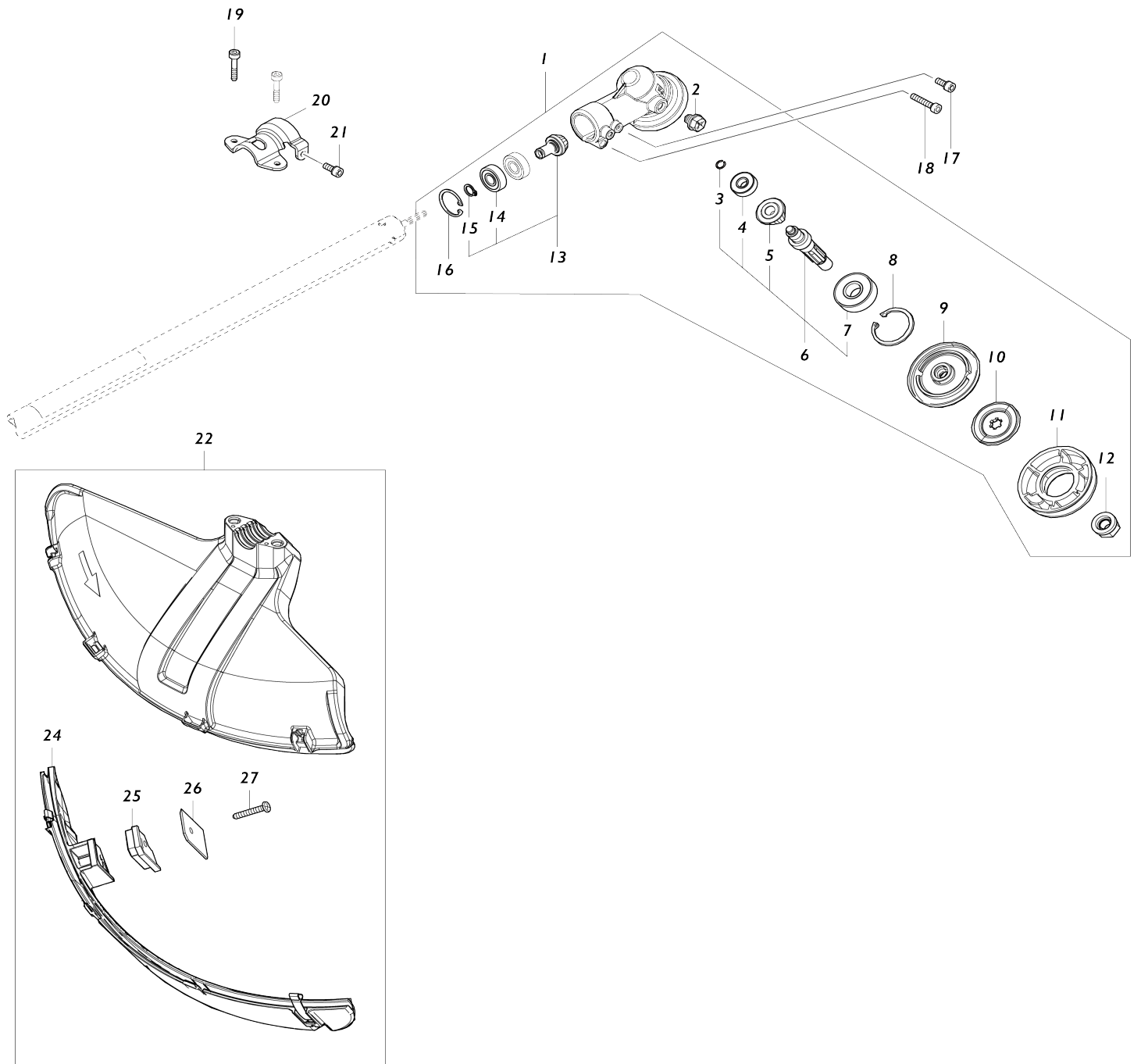
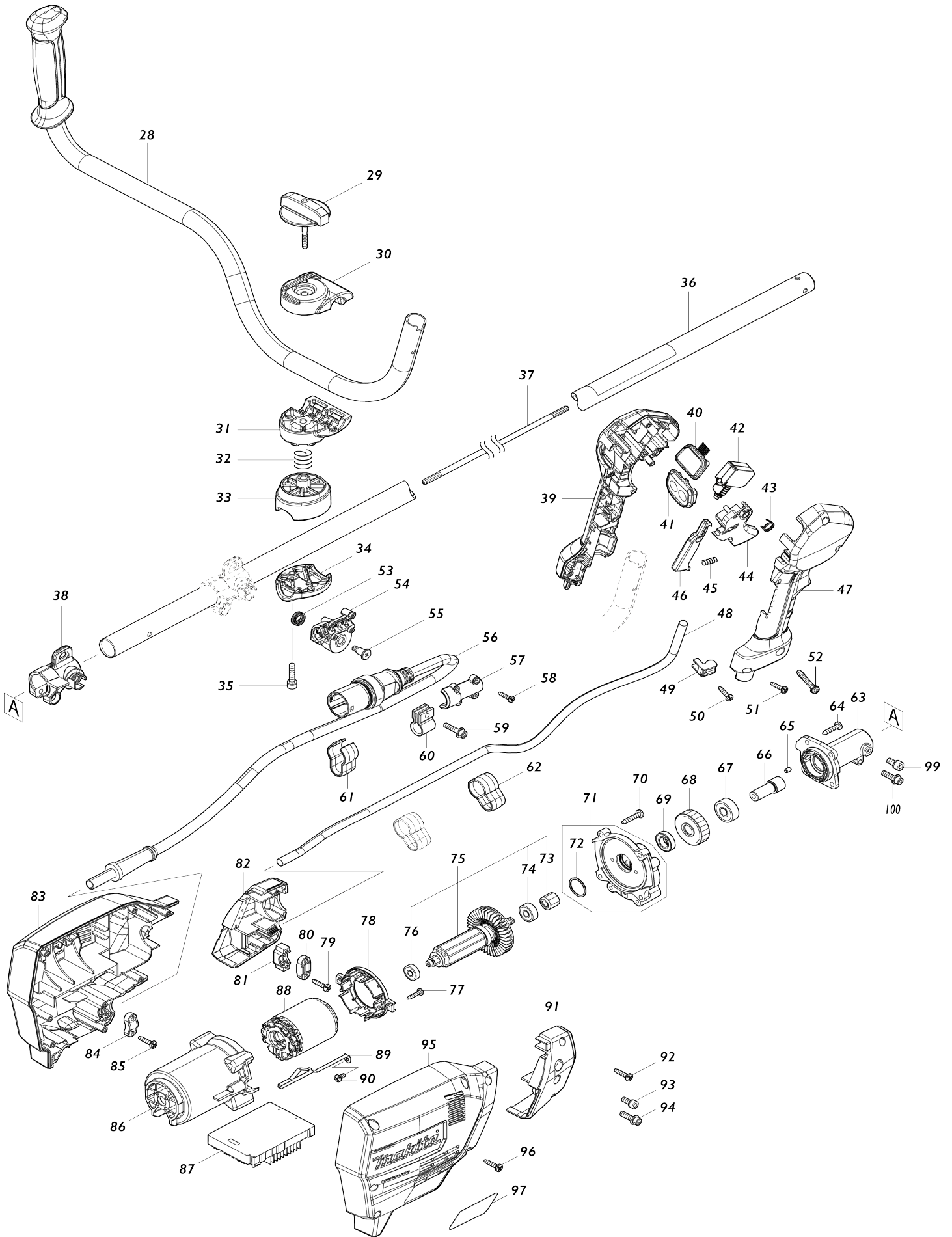


# Model No.UR101C BATTERY POWERED GRASS TRIMMER



# Model No.UR101C BATTERY POWERED GRASS TRIMMER



**Model No.UR101C BATTERY POWERED GRASS TRIMMER**

Obj. č.	Obj. č.	Popis	Možnost záměny	Množství	Nový/Stary	Poznámka 1	Poznámka 2
001	123853-1	GEAR CASE ASSEMBLY		1			
001		INC. 2,6,8-13,16					
002	265590-2	šroub zátka		1			
003	232350-7	RING SPRING 6		1		pru	
004	210030-5	ložisko MT811		1			
005	221484-1	SPIRAL BEVEL GEAR 19		1			
006	136233-2	CUTTER SHAFT ASS'Y		1		h	
006		INC. 3-5,7					
007	211228-7	kulič. ložisko 6202DDW = old 922117		1			
008	257432-4	RETAINING RING R-35		1		krou	
009	144312-2	RECEIVE WASHER COMPLETE		1		tal	
010	347104-0	CLAMP WASHER		1		podlo	
011	457274-8	CUP US		1		v	
012	252236-9	HEX. LOCK NUT M10-17		1		matka	
013	136235-8	SPIRAL BEVEL GEAR ASS'Y		1			
013		INC. 14,15					
014	210049-4	ložisko		2		lo	
015	257986-1	RETAINING RING (EXT) S-9		1		segrovka S-9= old961005-4	
016	257987-9	RETAINING RING (INT)R-24		1			
017	922216-6	imbus M5x14		1		imbus M5x14	
018	922242-5	imbus M5x25		1		imbus M5x25	
019	251513-6	H.S.H.BOLT M5X25		2			
020	347107-4	PROTECTOR CLAMP 24		1		spona	
021	922216-6	imbus M5x14		1		imbus M5x14	
022	191B54-1	PROTECTOR U 430 SET MG		1			
022		INC. 24-27					
024	144316-4	PROTECTOR U EXT. 420-450 COMPLETE		1		chr	
C10	346696-6	HOOK		2			
C20	232284-4	LEAF SPRING		2			
025	459765-5	CUTTER EXTENSION		1			
026	347115-5	CUTTER		1		n	
027	266459-3	TAPPING SCREW 5X25		1			
028	140J61-9	HANDLE 22 COMPLETE		1		dr	
029	168796-0	KNOB 57		1			
030	144313-0	UPPER HANDLE HOLDER COMPLETE		1		kryt	
C10	263005-3	vymezovací čep 6		1			
031	319517-5	LOWER HANDLE HOLDER		1		kryt	
032	233309-7	pružina upínání HM1304		1		pru	
033	319959-3	PIPE HOLDER		1		dr	
034	318426-5	PIPE CLAMP		1		spona AT3624 BC231 UD MS245.4U MS245.4UE MS246.4U MS246.UE	
035	922241-7	HEX. SOCKET HEAD BOLT M5X25		2			
036	140S82-5	SHAFT PIPE COMPLETE I		1			
C10	819312-8	MAKITA LOGO LABEL		1			

C20	819J22-7	CAUTION LABEL		1		
037	327056-1	SHAFT		1		h
038	412305-0	PIPE HOLDER 24		1		dr
039	183L60-0	GRIP SET		1		dr
C10	252180-0	HEX. LOCK NUT M5-8		1		
039		INC. 47				
040	140K37-2	INDICATION CIRCUIT COMPLETE E		1		okruh
041	140W06-5	SWITCH CIRCUIT COMPLETE G		1		
C10	819J26-9	SWITCH LABEL		1		
042	651436-2	SWITCH C3JW-1A-P-2		1		vyp
043	233540-5	TORSION SPRING 11		1		pru
044	459145-5	SWITCH LEVER		1		p
045	233101-1	vinutá pružina 4		1		vinut
046	459146-3	LOCK OFF LEVER		1		p
047	183L60-0	GRIP SET		1		dr
C10	252180-0	HEX. LOCK NUT M5-8		1		
047		INC. 39				
048	699132-4	POWER SUPPLY CORD UNIT		1		kabel
049	687260-7	držák kabelu GA5020/6020/HR2230		1		dr
050	266326-2	šroub 4x18=new265995-6		1		
051	266326-2	šroub 4x18=new265995-6		5		
052	911258-5	šroub M5x35 = old 290028		1		
053	232589-2	TORSION SPRING 12		1		pru
054	183N86-4	CONNECTOR HOLDER SET		1		konekor
054		INC. 57				
055	266511-7	+ FLAT FILLISTER HEAD SCREW M5		1		
056	699146-3	POWER SUPPLY CORD UNIT		1	*	kabel=new699161-7
056-1	699161-7	POWER SUPPLY CORD UNIT	<	1		nap
057	183N86-4	CONNECTOR HOLDER SET		1		konekor
057		INC. 54				
058	266429-2	TAPPING SCREW 3X16		4		
059	922244-1	H.S.H.BOLT M5X25 WITH WG		1		
060	412302-6	CORD HOLDER		1		dr
061	457458-8	CLAMP		1		spona
062	457458-8	CLAMP		2		spona
063	319919-5	PIPE BRACKET		1		
064	911233-1	šroub M5x20		4		
065	263002-9	vymezovací čep 4		1		
066	325811-5	SPINDLE HUB		1		v
067	211131-2	kuličkové ložisko 6001DDW =old 922041		1		lo
068	226931-7	HELICAL GEAR 29		1		ozuben
069	211150-8	ložisko 6935FD		1		
070	266459-3	TAPPING SCREW 5X25		4		
071	136230-8	GEAR BOX ASS'Y		1		p
071		INC. 72				
072	213961-7	O RING 22		1		
073	226932-5	HELICAL GEAR 10		1		
074	210005-4	kulič. ložisko 608DDW = old 211031-6		1		kuli

075	519587-6	ROTOR ASS'Y		1		rotor	
075		INC. 73,74,76					
076	210062-2	ložisko MT952		1		kuli	
077	266326-2	šroub 4x18=new265995-6		2			
078	459764-7	BAFFLE PLATE		1		deska	
079	266326-2	šroub 4x18=new265995-6		2			
080	687124-5	držák kabelu		1	*	dr	
080-1	687052-4	STRAIN RELIEF	O	1			
081	687051-6	svorka kabelu - nahrazuje 261041		1		svorka kabelu - nahrazuje 261041	
082	183N25-4	HOUSING COVER SET		1		obal	
082		INC. 91					
083	183N71-7	HOUSING SET		1		obal	
083		INC. 95					
084	687149-9	STRAIN RELIEF		1			
085	266326-2	šroub 4x18=new265995-6		2			
086	459763-9	MOTOR HOUSING		1		obal motoru	
087	620C69-2	CONTROLLER		1		ovl	
088	629471-8	STATOR		1	*		
088-1	629C13-6	STATOR	S	1		stator	
089	347620-2	PLATE		1	*	deska	
089-1	654887-8	EARTH PLATE	O	1		deska =old 347620-2	
090	911102-6	PAN HEAD SCREW M4X6		1			
091	183N25-4	HOUSING COVER SET		1		obal	
091		INC. 82					
092	266326-2	šroub 4x18=new265995-6		2			
093	922211-6	H.S.H.BOLT M5X12 WITH W		1	*		
093-1	922216-6	imbus M5x14	O	1		imbus M5x14	
094	922233-6	H.S.H.BOLT M5X20 WITH WR		1			
095	183N71-7	HOUSING SET		1		obal	
095		INC. 83					
096	266326-2	šroub 4x18=new265995-6		7			
097	856S03-4	UR101C NAME PLATE		1			
099	922211-6	H.S.H.BOLT M5X12 WITH W		1	*		
100	922233-6	H.S.H.BOLT M5X20 WITH WR		1	*		
101	638A31-1	LEAD UNIT	S	1		dr	
102	620L68-8	CONTROLLER B	S	1			
103	652119-7	PAN HEAD SCREW M2X6	S	6			
A01	782238-6	BOX WRENCH 17		1			
A02	783202-0	klíč inbus 4		1		kl	
A03	197243-4	BAND ASSEMBLY SET		1			
A04	831304-7	ACCESSORY BAG		1			
A05	198345-9	CUTTER BLADE 255-2 SET ME		1			
A06	144392-8	TOOL COVER 2T		1			
A07	197993-1	TRIMMER HEAD 95-M10L SET ME		1			
C10	456640-6	SPOOL HOLDER		1			
C20	232289-4	COMPRESSION SPRING 15		1			
C30	144259-0	SPOOL COVER COMPLETE		1			
C40	456642-2	SPOOL		1		c	
A08	198383-1	PLASTIC BLADE 255 SET ME		1	*		
A08-1	126642-3	PLASTIC BLADE ASSEMBLY255-M10L	O	1			

E01	807949-3	SOUND 94DB LABEL		1	*		
E01-1	807950-8	SOUND 95DB LABEL	<	1	*		
E01-2	807949-3	SOUND 94DB LABEL	<	1			
F09	197472-9	NYLON CORD 2.0-15M SET		1			
F10	197473-7	NYLON CORD 2.0-30M SET		1			
F11	197474-5	NYLON CORD 2.0-160M SET		1			
F12	197475-3	NYLON CORD 2.0-280M SET		1			
F15	198266-5	TRIMMER HEAD 110-M10L SET M E		1			
F20	198502-9	NYLON CORD 2.4-30M SET		1			
F21	198503-7	NYLON CORD 2.4-120M SET		1			
F22	198504-5	NYLON CORD 2.4-180M SET		1			
F24-1	199450-5	GREASE VESSEL SET	O	1			
F26	199868-0	PLASTIC BLADE 305 SET MG		1			
F27	199870-3	PLASTIC BLADE 305 BLADE SET MG		1			
F45	1915D7-6	TRIMMER HEAD 96-M10L SET		1			
F46	1914R6-0	TRIMMER HEAD ASSEMBLY 98-M 10L		1			
F47	1915D8-4	TRIMMER HEAD 96-M10L SET		1			
F48	1914R8-6	TRIMMER HEAD ASSEMBLY 98-M 10L		1			

Prosím uveďte objednáací číslo dílu v objednávce

Datum tisku 06. 11. 2024