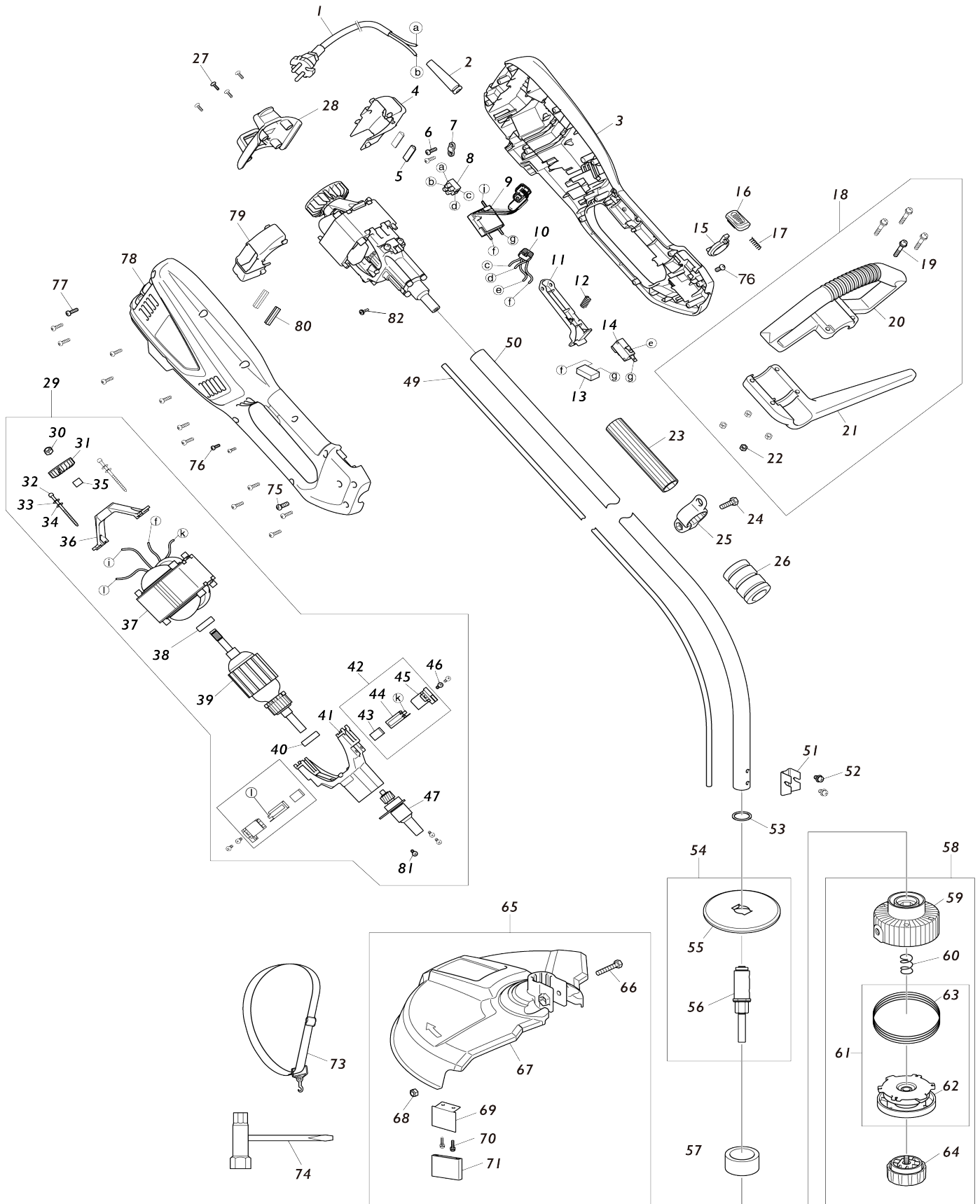


Model No.UR3501 ELECTRIC GRASS TRIMMER



Model No.UR3501 ELECTRIC GRASS TRIMMER

Obj. č.	Obj. č.	Popis	Možnost záměny	Množství	Nový/Stary	Poznámka 1	Poznámka 2
001	YA00000497	POWER CORD & PLUG		1			
002	YA00000516	CORD PROTECTOR		1			
003	YA00000660	HOUSING ASSEMBLY BLUE		1		obal motoru UR3500 UR3501	
003		INC. 078					
004	YA00000562	FAN HOUSING L		1			
005	YA00000514	RUBBER PAD		2			
006	YA00000618	TAPPING SCREW ST4X14		2			
007	YA00000547	CABLE PRESS BOARD		1			
008	YA00000501	TERMINAL SET		2	*		
008-1	YA00001306	TERMINAL BLOCK 2P	<	1			
009	YA00000643	PCB CONTROL BOARD		1		elektronika	
010	YA00000499	INDUCTANCE		1			
011	YA00000554	SWITCH TRIGGER		1		p	
012	YA00000513	SPRING		1			
013	YA00000498	CAPACITOR		1	*		
013-1	YA00001307	CAPACITOR	X	1			
014	YA00000555	SWITCH		1	*	vyp	
014-1	YA00001315	SWITCH	O	1		vyp	
015	YA00000539	SPACING COLLAR		1			
016	YA00000525	PUSH BUTTON		1			
017	YA00000511	COMPRESSION SPRING		1			
018	YA00000620	AUXILIARY HANDLE ASSEMBLY		1			
018		INC. 19-22					
019	YA00000621	NYLOC SCREW		4			
020	YA00000564	AUX.HANDLE COVER		1			
021	YA00000563	AUX.HANDLE SUPPORT		1			
022	YA00000622	HEX LOCK NUT M5		4			
023	YA00000623	THE INSULATING SHEATH		1			
024	YA00000624	PAN HEAD SCREWS M6X20		1			
025	YA00000541	SHOULD BELT RING		1			
026	YA00000521	RUBBER COVER		1			
027	YA00000625	TAPPING SCREW ST4.2X10		4	*		
027-1	YA00000453	T20 HEAD TAPPING SCREW ST4.2	O	4	*		
027-2	YA00000625	TAPPING SCREW ST4.2X10	O	4			
028	YA00000560	REAR COVER		1			
029	YA00000626	MOTOR ASSEMBLY 230V/1000W		1		motor cpl. UR3501 U R3502	
029		INC. 30-41, 43-47, 81					
030	YA00000627	HEX LOCK NUT M6		1			
031	YA00000507	IMPELLER		1			
032	YA00000538	PAN HEAD SCREW M4X55 WITH WG		2			
033	YA00000523	SPRING WASHER		2	*		
034	YA00000524	FLAT WASHER		2	*		
035	YA00000531	AXLE SLEEVE		1			
036	YA00000526	REAR BRACKET		1			
037	YA00000505	STATOR ASS'Y		1		stator	
038	YA00000431	BALL BEARING 608ZZ		1	*		

038-1	YA00000431	BALL BEARING 608ZZ	O	1			
039	YA00000658	ROTOR ASSEMBLY		1		rotor	
040	YA00000430	BALL BEARING 6900RS		1	*		
040-1	YA00000430	BALL BEARING 6900RS	O	1			
041	YA00000629	FRONT BRACKET ASSEMBLY		1			
042	YA00000489	CARBON BRUSH ASS'Y 2PCS/SET		2	*	dr	
042		INC. 43-45			*		
042-1	YA00000489	CARBON BRUSH ASS'Y 2PCS/SET	O	1		dr	
042-1		INC. 43-45					
043	YA00000504	CARBON BRUSH		1	*		
043-1	YA00001194	CARBON BRUSH 2PCS/SET	S	1		uhl	
044	YA00000502	COPPER BRUSH HOLDER		1			
045	YA00000503	BRUSH HOLDER BRACKET		1			
046	YA00000630	PAN HEAD SCREW M4X12 WITH WR		4			
047	YA00000483	SHAFT ASS'Y		1		una	
049	YA00000551	FLEXIBLE SHAFT		1		ohebn	
050	YA00000495	TUBE ASS'Y		1		trubka vy	
051	YA00000527	FIXING FRAME		1			
052	YA00000647	PAN HEAD SCREW M5X10 WITH WR		2	*		
052-1	YA00000647	PAN HEAD SCREW M5X10 WITH WR	O	2			
053	YA00000534	SEALING RING		1			
054	YA00000485	OUTPUT SHAFT ASS'Y		1			
054		INC. 55-56					
055	YA00000432	SAFETY GUARD		1			
056	YA00000482	SHAFT JOINT ASS'Y		1		h	
057	YA00000568	DUST PROOF RING		1		prachov	
058	YA00000649	STRING TRIMMER HEAD ASSEMBLY		1	*		
058		INC. 59-60,62-64			*		
058-1	YA00000649	STRING TRIMMER HEAD ASSEMBLY	O	1			
058-1		INC. 59-60,62-64					
059	YA00000650	STRING TRIMMER HEAD UPPER CASE		1	*	t	
059-1	YA00000650	STRING TRIMMER HEAD UPPER CASE	O	1		t	
060	YA00000512	COMPRESSION SPRING		1		pru	
061	YA00000651	TRIMMER HEAD SPOOL WITH LINE		1	*		
061		INC. 62-63			*		
061-1	YA00000651	TRIMMER HEAD SPOOL WITH LINE	O	1			
061-1		INC. 62-63					
062	YA00000476	TRIMMER HEAD SPOOL		1	*		
062-1	YA00000476	TRIMMER HEAD SPOOL	O	1			
063	YA00000635	NYLON CORD / LINE 5M		1	*		
063-1	YA00000635	NYLON CORD / LINE 5M	O	1			
064	YA00000652	KNOB ASSEMBLY		1		v	
065	YA00000653	SHIELD ASSEMBLY		1		kryt UR3501	
065		INC. 66-71					
066	YA00000654	PAN HEAD SCREW M6X35		1	*		

066-1	YA00000654	PAN HEAD SCREW M6X35	O	1			
067	YA00000544	SAFETY GUARD		1			
068	YA00000627	HEX LOCK NUT M6		1			
069	YA00000529	BLADE		1			
070	YA00000655	TRUSS HEAD TAPPING SCREW 4X 12		2			
071	YA00000518	BLADE COVER		1			
073	YA00000639	STRAP		1			
074	YA00000437	SPANNER		1	*		
075	YA00000640	T20 PAN HEAD SCREW M5X10		2	*		
075-1	YA00000640	T20 PAN HEAD SCREW M5X10	O	2			
076	YA00000641	T10 HEAD TAPPING SCREW ST3X 10		2	*		
076-1	YA00000641	T10 HEAD TAPPING SCREW ST3X 10	O	2			
077	YA00000656	T20 HEAD TAPPING SCREW ST4.2 X1		12	*		
077-1	YA00000656	T20 HEAD TAPPING SCREW ST4.2 X1	O	12			
078	YA00000660	HOUSING ASSEMBLY BLUE		1		obal motoru UR3500 UR3501	
078		INC. 3					
079	YA00000561	FAN HOUSING R		1			
080	YA00000514	RUBBER PAD		2			
081	YA00000630	PAN HEAD SCREW M4X12 WITH WR		3			
082	YA00000657	PAN HEAD SCREW M3X6		1	*		
082-1	YA00000657	PAN HEAD SCREW M3X6	O	1			
A01	YA00000437	SPANNER		1			

Prosím uveďte objednáací číslo dílu v objednávce

Datum tisku 06. 11. 2024